

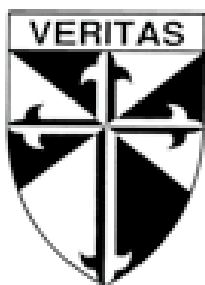
DIOCESE *of* SACRAMENTO
CATHOLIC SCHOOLS

COVID-19 SAFETY PLAN (CSP)
AND
CAL/OSHA COVID-19 PREVENTION PROGRAM (CPP)

COVID-19 PROTOCOLS
FOR ELEMENTARY SCHOOLS

St. Vincent Ferrer School

Service, Virtue, Faith and Scholarship



V 9.1
February 1, 2021

INTRODUCTION

We have created this plan to support our safe return to school in August amid the current pandemic. Our needs and responses are different from public schools. Our site populations are relatively small, and we do not face certain complications like bussing, large special needs populations, collective bargaining, and ADA funding mechanisms. The guidelines in this plan are based on guidance from the Centers for Disease Control and Prevention (CDC), the World Health Organization (WHO), and other applicable federal, state, and local agencies.

Our priorities are:

1. **Safety:** Mitigating and slowing the growth of COVID-19 in the context of a return to our ministry. Understanding that there is inherent risk in returning from social distancing while in a pandemic, we also understand that we are part of a societal decision that accepts balancing COVID-19 risk against the need for life to continue.
 - a. **Stable Groups:** In the spirit of “reducing the denominator,” students are organized into discrete Stable Groups to minimize the spread of COVID-19 between groups.
 - b. **Hygiene:** Within Stable Groups, we will emphasize strong hygienic practice.
 - c. **Distance options:** If a student or their family member is in a higher-risk group, we will give them the option of continuing independent, remote learning.
2. **Presence:** Keeping school open daily. We do not want to burden parents with challenging schedules that require them to stay home and out of work - we want our students at school in their Stable Group for the full day.
3. **Growth:** Despite limitations, we want our children to continue their academic progress at grade level in their faith and in all core academic standards.

We are proud of our success in offering on-campus instruction, but the renewed spread of Covid-19 in recent months reminds us of our need to be vigilant. Even after receiving waivers in multiple counties, **our policy remains that it is a privilege to access on-campus instruction; in going beyond distance learning, we must all work together to mitigate the risk of Covid-19.** We have tailored this document specifically for our school environments and populations and will continue updating it with the best data and practices in mind. The school principal will share any updated documents on the school website and through the school information system.



TABLE OF CONTENTS

Introduction	1
CAL/OSHA COVID-19 PREVENTION PROGRAM	5
Layers of Safety: Infection Mitigation Strategies	
Behavioral Assessments	5
Antigen Screening	6
Social Distancing	6
Student Stable Groups	7
Shared Spaces	8
Classrooms	8
Other Facility Adjustments	8
Office Capacity	9
Staff Lounge	9
Screening	9
Personal Protective Equipment (PPE)	10
Face Coverings	10
Gloves	13
Staff Training and Family Education	14
Delivering Instruction	14
Cleaning and Disinfection Routine	15
Healthy Hygiene Practices	15
Visitor & Volunteer Protocols	15
Food & Package Restrictions	15
Travel Restrictions	16
COVID SYMPTOMS AND CASE RESPONSES	17
Contact Tracer	17
Symptoms	17
Testing	18
Vaccination	18
Response to Confirmed/Suspected COVID-19 Cases and Close Contacts (TABLE 1)	19
Steps to Take in Response to Negative COVID-19 Test Result (TABLE 2)	21
SAFE ENVIRONMENT	23
Product Guides	24
General Disinfection Measures	25
Safe Water	25
HVAC Considerations	25
School Procured Additional Supplies	26
Supplies Provided by Families/Students	26
FACILITY ADJUSTMENTS	27



SCHOOL SCHEDULE & ROUTINES	27
Morning Drop-Off	27
Lunch Schedule	28
Recesses and Physical Education	28
After School Pick-Up	29
Extended Care	29
Music and Library	29
Masses	29
APPENDIX A: FAQ	30
APPENDIX B: FACILITY ADJUSTMENTS	31
Photo Samples	31
Daily Health Screening Form-Adult	32
APPENDIX C: PROTOCOL SIGNAGE	33
Surface cleaning	33
Restroom use	33
Teaching Cleaning Expectations	33
Screening	33
Student Checklists	33
Additional Facility Signage	33
Student Symptom and Decision Tree	34
APPENDIX D: AGENCY UPDATES AND RESOURCES	35
APPENDIX E: COMMUNICATIONS	38
Confirmed Case Letter	38
Close Contact Letter	39
Symptoms Letter	40
Quarantine Letter	41
APPENDIX F: DISTANCE LEARNING	42
Distance Learning Outline	42
Distance Learning School-wide Guidelines	42
Attendance	42
Classwork	43
Communication	43
Online Safety Protocols	43
Delivery of Instruction	43
Independent, Remote Learning for At-Risk Students	44
Overview	44



Roles and Responsibilities	44
Next Steps & Additional Information	45
APPENDIX F: APPLICATION FOR WAIVER	45
Background Information	45
Components per CDPH Waiver Requirements	46
Community Consultation	46
APPENDIX G: POST-BREAK QUESTIONNAIRE	48
APPENDIX H: SAMPLE TESTING LETTER AND WAIVER	51
APPENDIX I: COVID-19 PREVENTION PROGRAM (CCP)	57
Identification and Evaluation of COVID-Hazards	58
Components per CDPH Waiver Requirements	58
Employee Participation	58
CSP AND CPP 6 Control of COVID-19 Hazards	59
Physical Distancing	59
Face Coverings	60
Engineering controls	60
Cleaning and disinfecting	60
Shared tools, equipment and personal protective equipment (PPE)	61
Hand sanitizing	61
Personal protective equipment (PPE) used to control employees' exposure to COVID-19	61
Investigating and Responding to COVID-19 Cases	61
System for Communicating	62
Training and Instruction	62
Exclusion of COVID-19 Cases	63
Reporting, Recordkeeping, and Access	63
Return-to-Work Criteria	64



GENERAL PROTOCOLS

CAL/OSHA COVID-19 PREVENTION PROGRAM

Layers of Safety: Infection Mitigation Strategies

Over the course of this school year, we have offered a variety of mitigation strategies working in unison to reduce our risk of exposure and transmission of Covid-19 on campus. The new [CDPH guidelines of January 14, 2021](#), affirm this approach; to quote a passage on page 14,

“A helpful conceptual framing as schools plan for and implement safety measures for in-person instruction is the layering of mitigation strategies. Each strategy (face coverings, stable groups, distancing, etc.) decreases the risk of in-school transmission; but no one layer is 100% effective. It is the combination of layers that are most effective and have been shown to decrease transmissions.

We have ordered the list below such that the interventions known at this time to be more effective in reducing the risk of transmission appear before the ones that are helpful but may have a potentially smaller effect or have less evidence of efficacy. Of note, though comparative scientific assessments are limited, the top three items are likely of similar importance: 1. Face coverings 2. Stable groups 3. Physical distancing 4. Adequate ventilation 5. Hand hygiene 6. Symptom and close contact exposure screening, with exclusion from school for staff or students with symptoms or with confirmed close contact 7. Surveillance or screening testing.”

We have applied all these strategies at our schools this school year, and they have proven themselves effective. We have also applied additional strategies, including behavioral assessments on our return from extended breaks. This section details the steps we take in each of these areas.

Behavioral Assessments

- In response to the recent dramatic spike in Covid-19, and as a condition for a return to on-site learning, families must complete a behavioral assessment following the Stable Group break; some activities will require families to remain in distance mode for a period of ten days. The questionnaire is available in [Appendix H](#).
- Should families not wish to respond to the questionnaire, students will be required to remain in distance mode for the recommended quarantine period (10 days).



Antigen Screening

- As a condition for a return to on-site learning, schools may require employees and students wishing to return to campus to undergo antigen screening by our medical partners (Urgent Care Now, Inc., or other designee) at a place, time, and frequency as designated by the Catholic School Department. A sample test letter and waiver form are available in [Appendix I](#).
- Should families not wish to test with the school's designated provider, they may provide their own Covid-19 test result issued by a licensed medical provider. The time at which the test was taken must be less than 72 hours from the intended return to campus with a negative test result.
- We are currently providing for the testing of employees and middle school students in a number of locations and will update screening policy based on our analysis of results in collaboration with county health departments.
- As of February 1, 2021, we are screening middle school students and employees at schools that have had recent cases in Sacramento and Solano Counties; at schools without cases, we are currently screening employees twice per month. We reserve the right to increase the frequency of screening should Covid-19 surge; more counties make antigen test kits available to us; and/or we determine it is prudent to do so in collaboration with our county health offices and medical advisors.
- Should families not wish to undergo antigen testing or provide their own test result, students will be required to remain in distance mode until such time that the school discontinues mandatory testing.

Social Distancing

- All persons on campus will practice social distancing of six feet whenever possible, and a minimum of three feet where impossible
- Close contact interactions (for the purposes of determining contact tracing) is considered less than 6ft and longer than a cumulative total of 15 minutes or more over a 24-hour period.
- Stable Groups are considered close contacts even with distancing given prolonged indoor exposure.
- Signage will be used throughout campus to support social distancing and proper hygiene norms (Examples in Appendix B)
- Ad-hoc interactions by adults should be avoided
- Mass gatherings, such as in-person assemblies, are prohibited
- Students will be mindful of the social distancing and health practices as instructed or they will not be allowed on campus
- No more students will be admitted into a restroom at a time than there are sinks



Student Stable Groups

The school has one class per grade level. Each class will be its own Stable Group. These Stable Groups must be stable and have minimal contact with other groups or individuals who are not part of their Stable Group.

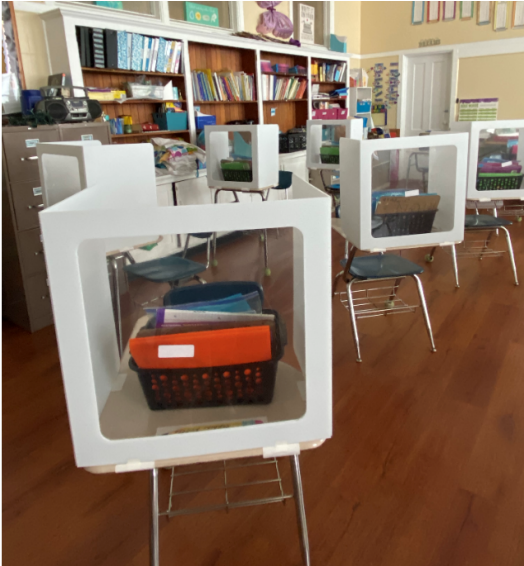
- Stable Groups are not to share instructional spaces unless thorough cleaning occurs between uses.
- Students will have a designated space solely for their use in their classrooms and the extended care space.
- Students and staff will not share workspaces or supplies.
- Maximize space between seating and desks. Distance teacher and other staff desks at least 6 feet away from student and other staff desks. Distance student chairs at least 6 feet away from one another, except where 6 feet of distance is not possible after a good-faith effort has been made. Upon request by the local health department and/or State Safe Schools Team, the superintendent should be prepared to demonstrate that good-faith effort, including an effort to consider all outdoor/indoor space options and hybrid learning models. Under no circumstances should the distance between student chairs be less than 4 feet. If 6 feet of distance is not possible, it is recommended to optimize ventilation and consider using other separation techniques, or arranging desks in a way that minimizes face-to-face contact.
- Short-term exposures of less than 6 feet between students and staff are permitted (e.g., a teacher assisting a student one-on-one), but the duration should be minimized and masks must be worn.
- Consider redesigning activities for smaller groups and rearranging furniture and play spaces to maintain separation.
- Staff should develop instructions for maximizing spacing and ways to minimize movement in both indoor and outdoor spaces that are easy for students to understand and are developmentally appropriate.
- Prioritize the use and maximization of outdoor space for activities where possible.
- Activities where there is increased likelihood for transmission from contaminated exhaled aerosols such as band and choir practice and performances are permitted outdoors only, provided that precautions such as physical distancing and use of face coverings are implemented to the maximum extent (see below in Non-classroom spaces).
- Consider using cleanable privacy boards or clear screens to increase and enforce separation between staff and students.



Shared Spaces

Employees are encouraged to disinfect their workspace multiple times throughout the day, giving special attention to commonly touched surfaces. Sites have hand sanitizers and cleaning products accessible throughout the workplace to disinfect frequently touched objects and surfaces.

Classroom Plans



- Student desks will be designated for each person and desks will be spread out to maximize space.
- Windows will be opened for proper ventilation.
- Classroom rugs, group tables, and superfluous furniture will be removed and individual desks installed with sneeze guards .
- Students have their own designated desk with their own supplies, water bottle, cleaning materials, and hand sanitizer.
 - Classrooms with tables have plexiglass dividers
 - Teachers will utilize outdoor space as much as possible.

Other Facility Adjustments

- Extended Care and the Science Lab will be used to accommodate sub Stable Groups for Extended Care
 - Drinking fountains will be turned off, and an additional water bottle filling station will be added.
 - Hooks will be used for backpacks in rooms that have them.



Office Capacity

–Site will restrict the number of persons in the offices to maintain social distancing.

Staff Lounge

–Staff lounge will be closed except for a scheduled copy machine use time.

- Staff meetings will be virtual, even for employees in the same office or school.
- This area will be closed for eating. Shared appliances such as the coffee machine refrigerator and microwave can be used one employee at a time, and appliances must be disinfected after each use.

Screening

- Please see the updated symptom checklist on page 34. This protocol now distinguishes between higher-risk and lower-risk symptoms.
- Students and staff must conduct a daily self-check (See Appendix B Student Checklists) before they come to campus.
- Designated screeners: School employees may all function as designated screeners for students and non-employees. The principal or school office staff may serve as screeners for faculty and staff if a third-party screener is required.
- A temperature check will be conducted for all persons entering campus, and staff will complete an additional screening document ([see Appendix B](#)) A school may opt to use a Google Form or similar electronic document for employees as approved by the Catholic School Department. Unless otherwise so directed by the county health officer, the maximum temperature for someone to be admitted to campus is 100.4 degrees Fahrenheit.
- During the day, any person experiencing or showing symptoms will report to the office designated isolation space for screening
- The principal will retain a record of employee temperatures in a locked cabinet for a minimum of 90 days
- If a staff member already at school shows symptoms as described above, a supervisor will allow them to go home without penalty for that day.
- The Diocese is working with the County of Solano to provide testing for faculty and staff at regular intervals. Principals have received an HR memorandum to that effect.
- The school principal and/or contact tracer shall update the Catholic Schools Department Executive Assistant every Monday morning regarding confirmed COVID-19 cases amongst staff and students from the previous week.



Personal Protective Equipment (PPE)

PPE is not a substitute for social distancing or proper handwashing. In addition to using PPE, please remember to:

- *Wash your hands often with soap and water for at least 30 seconds. Use hand sanitizer with at least 70% alcohol if soap and water are not available.*
- *Avoid touching your eyes, nose, and mouth.*

Face Coverings

Introduction

The following section is quoted verbatim from the updated [CDPH Guidance of January 14, 2021, pp. 17-19.](#)

“Face coverings must be used in accordance with CDPH guidelines unless a person is exempt as explained in the guidelines.

- Information contained in the CDPH Guidance for the Use of Face Coverings should be provided to staff and families of students. The face covering guidance applies to all settings, including schools. The guidance discusses the circumstances in which face coverings must be worn and the exemptions, as well as any policies, work rules, and practices that employers have adopted to ensure the use of face coverings.
- Teach and reinforce use of face coverings, or in limited instances, face shields with drapes. Students and staff should be frequently reminded not to touch the face covering and to wash their hands frequently.
- Information should be provided to all staff and families in the school community on proper use, removal, and washing of cloth face coverings.
- Training should also include policies on how people who are exempted from wearing a face covering will be addressed.
- **Students in all grade levels K-12 are required to wear face coverings at all times, while at school, unless exempted.** [*Emphasis added - ed.*]
 - A cloth face covering or face shield should be removed for meals, snacks, naptime, or when it needs to be replaced. When a cloth face covering is temporarily removed, it should be placed in a clean, safe area, clearly marked with the student’s name and date, until it needs to be put on again.
- Participants in youth and adult sports should wear face coverings when participating in the activity, even with heavy exertion as tolerated, both indoors and outdoors.
- The face covering guidance recognizes that there are some people who cannot wear a face covering for a number of different reasons. People are exempted from the requirement if they are under age 2, have a medical or mental health condition or disability that would impede them from properly wearing or handling a face



covering, those with a communication disability, or when it would inhibit communication with a person who is hearing impaired. Those with communication disabilities or caregivers of those with communication disabilities can consider wearing a clear mask or cloth mask with a clear panel when appropriate.

- **Persons exempted from wearing a face covering due to a medical condition, as confirmed by school district health team and therapists, must wear a non-restrictive alternative, such as a face shield with a drape on the bottom edge, as long as their condition permits it.** *[Emphasis added - ed.]*
- Schools must develop protocols to provide a face covering to students who inadvertently fail to bring a face covering to school to prevent unnecessary exclusions.
- Schools should offer alternative educational opportunities for students who are excluded from campus because they will not wear a face covering. *[Note: all schools offer distance learning programs as an alternative. - ed.]*
- In order to comply with this guidance, schools must exclude students from campus if they are not exempt from wearing a face covering under CDPH guidelines and refuse to wear one provided by the school.
- Employers must provide and ensure staff use face coverings and all other required personal protective equipment in accordance with CDPH guidelines.
- The California Governor's Office of Emergency Services (CalOES) and CDPH will be working to support procurement and distribution of face coverings and needed personal protective equipment to schools. Additional information can be found [here](#).
- Classrooms, school buses, and shared school office spaces used by persons who cannot tolerate face coverings are less safe for others who share that environment. Schools may want to consider notifying others who share spaces with unmasked or sub-optimally masked individuals about the environment. Also, consider employing several additional mitigation strategies (or fortifying existing mitigation strategies) to optimize safety. These may include increasing the frequency of asymptomatic tests offered to unmasked or sub-optimally masked individuals, employing longer social distances, installing clear physical barriers, reducing duration of time in shared environments, and opting for either outdoor or highly ventilated indoor educational spaces, as possible.

Staff

- All staff must use face coverings in accordance with CDPH guidelines unless Cal/OSHA standards require respiratory protection.
- For staff who come into routine contact with others, CDPH recommends the use of disposable 3-ply surgical masks, which are more effective than cloth face coverings.
- In limited situations where a face covering cannot be used for pedagogical or developmental reasons, (e.g., communicating or assisting young children or those with special needs) a face shield with a drape (per CDPH guidelines) can be used



instead of a face covering while in the classroom as long as the wearer maintains physical distance from others. Staff must return to wearing a face covering outside of the classroom.

- Workers or other persons handling or serving food must use gloves in addition to face coverings.
- Employers should consider where disposable glove use may be helpful to supplement frequent handwashing or use of hand sanitizer; examples are for workers who are screening others for symptoms or handling commonly touched items. Face coverings, personal hygiene, social distancing, and frequent cleaning efforts are critical parts of employee protection.”

Further Information and Direction on Face Masks

The school will have extra masks on hand for people who come to campus without one. If the school cannot provide a mask (for example, if they have exhausted supplies of spare masks), individuals without them will not be allowed on campus.

Studies continue to emphasize the importance of face coverings in slowing the progress of COVID. A [recent study by Duke University](#) found that, after N95 and surgical masks, a poly/cotton face mask is the most effective in reducing droplet counts.

Per CDPH/CalOSHA Industry-Specific Guidance:

- Face coverings must be used in accordance with CDPH guidelines unless a person is exempt, as explained in these guidelines.
- Teaching and reinforcing the use of face coverings, or in limited instances, face shields: The school will review the proper wear and care of face coverings with all staff, students, families, and anyone present on campus.
- The school shall frequently remind students and staff not to touch the face covering and to wash their hands frequently.
- Information for staff and families in the school community on the proper use, removal, and washing of cloth face coverings can be found here: <https://bit.ly/washingfacecoving>
- Training will be provided on policies on how people who are exempted from wearing a face covering will be addressed (see policies below).

FACE MASKS FOR STUDENTS

The CDPH guidelines strongly encourage masks for children 2 years through 2nd grade, and mandate them for older students; therefore, the Diocese of Sacramento requires all students wear face masks at school.

Students who refuse to wear face coverings will be excluded from campus, with the following exceptions:



- Persons younger than two years old and anyone who is unconscious or incapacitated;
- Persons exempted from wearing a face covering due to a medical condition, as confirmed by the principal, must wear a non-restrictive alternative, such as a face shield with a drape on the bottom edge, as long as their condition permits it.

When a cloth face covering is temporarily removed, it should be placed in a clean paper bag (marked with the student's name and date) until it needs to be put on again.

FACE MASKS FOR STAFF

All staff must use face coverings in accordance with CDPH guidelines unless Cal/OSHA standards require respiratory protection.

- For staff who come into routine contact with others, CDPH recommends the use of disposable 3-ply surgical masks, which are more effective than cloth face coverings.
 - **In limited situations**, where face coverings cannot be used for pedagogical or developmental reasons, (i.e., communicating or assisting young children or those with special needs) a face shield can be used by staff in the classroom instead of a cloth face covering as long as the wearer maintains physical distance from others. Staff must return to wearing a face-covering outside of the classroom.

To reiterate, everyone on campus must wear a mask, with the following exceptions:

- Children younger than 2 years old, or persons who are unconscious or incapacitated;
- In limited situations where face coverings cannot be used for pedagogical or developmental reasons, (i.e., communicating or assisting young children or those with special needs) a face shield can be used by staff in the classroom instead of a cloth face covering as long as the wearer maintains physical distance from others. Staff must return to wearing a face-covering outside of the classroom."
- Proper wear and care of face coverings found [here](#).

Gloves

All custodians and food services personnel must wear gloves

- Employers should consider where disposable glove use may be helpful to supplement frequent handwashing or use of hand sanitizer; examples are for workers who are screening others for symptoms or handling commonly touched items.
- Touching your face with contaminated hands, whether gloved or not, poses a



significant risk of infection. Wearing gloves does not diminish the need to wash your hands. Additionally, the proper removal of gloves reduces the risk of being exposed to contamination.

Staff Training and Family Education

Delivering Instruction

- Staff and families will be trained and educated in sanitation and hygiene instruction through thorough training and review of this protocol, posters, and routines (See Appendix E).
- The principal will review the full Return-to-School plan with faculty and staff prior to students returning to campus.
- Parents must review and acknowledge the plan prior to their students returning to campus. Principals will present the plan to their communities by webinar and make themselves available for questioning.
 - The school will distribute all diocesan communication and public service announcements pertaining to the plan.
 - The school will draw particular attention to at-home and at-school screening, PPE, and hygienic procedures and materials ([See Personal Protective Equipment \(PPE\)](#)).
- Teachers will provide initial and routine instruction in social distancing and health practices to their students in keeping with all provisions of this protocol.
- Schools will inform the community of changes to this Plan via their information system and post the updated Plan, or a link to the diocesan portal website (www.scd.org/2021schools), on the school website.
- Activities where there is increased likelihood for transmission from contaminated exhaled droplets—such as singing, yelling, chanting, blowing wind instruments —are not permitted at this time.
- Implement procedures for turning in assignments to minimize contact.
- Consider the use of non-classroom space for instruction, including regular use of outdoor space, weather permitting.
- Avoid sharing things; where sharing occurs, clean, and disinfect between uses.
- Lessons that involve food prep, or shared snacks are prohibited (bake sales, friendships, salads, etc.).

Cleaning & Disinfection Routine



- Students will have one ziplock bag labeled “Clean” with 5 clean rags and another labeled “dirty” with dirty rags that they take home daily, like their backpack.
- Teachers will spray the area with disinfectant to ensure proper coverage and wait Times.

Healthy Hygiene Practices

Reducing the risk of exposure to COVID-19 by proper personal hygiene practices and disinfection is a critical part of ensuring student and staff safety.

- Staff and families will be trained and educated in sanitation and hygiene instruction through thorough training and review of protocols (See Appendix E).
- Within Stable Groups, we will emphasize strong, hygienic practice.
- Cleaning hands at key times with soap and water for at least 20 seconds or an alcohol-based hand sanitizer with at least 60% alcohol if soap and water are not readily available.
 - Build time into daily routines for students and staff to wash hands.
- Families will be constantly reminded to maintain hygiene and distancing at home and in the community.

Visitor & Volunteer Protocols

The safety of our staff and students is our primary concern.

- We will not allow normal visitation to our campuses until our reopen date.
- Volunteers are not allowed.
- Only diocesan scheduled workers are allowed on campus during preparation for reopen.

Once school reopens:

- Schools will limit volunteers on campus to those performing essential tasks.
- Parent volunteers can only be permitted in their own child’s classroom if deemed essential by the principal.
- Volunteers supervising outdoor activities (such as yard duty) are permitted so long as they follow staff protocols.

Food & Package Delivery

Sharing food is prohibited at all times. Personal food and/or personal package deliveries are not allowed. Students must bring their own food to school or purchase meals through the approved food service program.



Food Restrictions

Students will continue to bring their own daily lunch, snack and water bottles. Holiday and birthdays celebrations that include bringing or sharing food and drinks will be prohibited for students, families and staff members. Lunch delivery services from DoorDash, GrubHub or the like, will only be allowed in an emergency situation. FAST FOOD is not permitted.

Travel Restrictions

As follows is our policy on travel by employees, effective January 13, 2021:

All non-essential travel more than 120 miles from one's place of residence or other states or countries, will now require the same protocol as established for travel outside of California. An employee who intends to travel more than 120 miles from one's place of residence or other states or countries, will need to notify their supervisor and receive approval to take additional time off to quarantine or work remotely for two weeks upon returning home.

The employee may return to work earlier than the two-week quarantine period if the following has been fulfilled:

- a. The employee has taken a COVID test once back in California (or place of residence) and has written proof of a negative COVID test and
- b. The employee has been in California (or place of residence) for 72 hours and free of any symptoms.

Prudence dictates that one should limit one's travel plans during a pandemic. If travel is necessary, the Catholic School Department highly recommends that everyone within our school communities abide by the travel restrictions and quarantine rules provided by the state of California and the place they are visiting. We encourage all school families and employees to diligently continue to follow CDC guidelines with regards to social distancing, mask wearing, and proper hygiene. It will be up to each principal to encourage all members of the school community to continue practicing safety protocols, whether they are home or traveling. In addition, out of an abundance of caution, a principal will require parents to have their student receive remote instruction for two weeks upon the return from travel. As always, all school employees should be reminded that their conscientious demonstration of safe behaviors outside of school is a gift to their students.



COVID SYMPTOMS and CASE RESPONSE

Definitions

A **contact** is defined as a person who is <6 feet from a case for >15 minutes. An entire Stable Group or cohort is considered a contact if they have shared time indoors, even with distancing.

A **Stable Group** is a group with fixed membership that stays together for all courses and activities (e.g., lunch, recess, etc.) and avoids contact with other persons or Stable Group.

Contact Tracers

- The school has a designated employee who is a contact tracer whose name is on file with the Catholic School Department and County Health.
- The School's Contact Tracer is: Jessica Roberts
- Contact tracers must be trained either by the county within which the school resides, or take one of the following courses on contact tracing:
 - Webinar-Based as recommended by the CDC:
<https://www.cdc.gov/coronavirus/2019-ncov/php/contact-tracing/general-training-modules.html>
 - Coursera Option:
<https://www.coursera.org/learn/contact-tracing-for-covid-19>

Symptoms

Students

- Fever of 100.4 degrees or higher;
- Sore throat;
- New uncontrolled cough that causes difficulty breathing (for students with chronic allergic/asthmatic cough, a change in their cough from baseline);
- Diarrhea, vomiting, or abdominal pain;
- New onset of severe headache, especially with a fever.
- (If a student is exhibiting symptoms refer to student health history form)

Adults

- Fever of 100.4 degrees or higher;
- Chills;
- Cough;
- Shortness of breath/ difficulty breathing; Fatigue;
- Muscle or body aches;
- Headache;



- New loss of taste or smell;
- Sore throat;
- Congestion or runny nose;
- Nausea or vomiting; Diarrhea

Testing

- Any student or staff person with symptoms not explained by another non-infectious condition diagnosed by a medical professional needs to be tested for COVID-19.
- Per this directive, symptomatic individuals must be tested within 48 hours of symptom onset, and provide test results within 72 hours.
- If the medical provider for the individual with symptoms cannot guarantee a 72-hour turnaround in test results, the symptomatic individual must seek out a different lab.

Parents and students are responsible for the cost of their own testing.

Vaccination

CDPH strongly recommends that all persons eligible to receive COVID-19 vaccines receive them at the first opportunity. Currently, people under 16 are not eligible for the vaccine since trials for that group are still underway.

In addition to vaccines required for school entry, CDPH strongly recommends that all students and staff be immunized each autumn against influenza unless contraindicated by personal medical conditions, to help:

- Protect the school community.
- Reduce demands on health care facilities.
- Decrease illnesses that cannot be readily distinguished from COVID- 19 and would therefore trigger extensive measures from the school and public health authorities.

Because vaccine implementation for schools is rapidly evolving, the CDPH has provided a separate vaccine guidance document that will be available on the Safe Schools for All Hub here: <https://covid19.ca.gov/vaccines/>

The Diocese of Sacramento is working closely with local health departments to identify times and locations for the vaccination of employees, in keeping with state and local guidelines on vaccination. Teachers are currently in [Phase 1B, Tier One](#), which is the



current default tier for the state; not all counties have vaccine supply to progress to that tier.

Response to Confirmed/Suspected COVID-19 Cases and Close Contacts (TABLE 1)

SCENARIO 1: ANSWERING “YES” ON SCREENING <u>OR</u> EXHIBITING A COVID <u>SYMPTOM</u>	
IMMEDIATE ACTIONS	COMMUNICATION
<p>Student/staff are isolated at the site in the designated office space until they can be sent home or to a healthcare facility per CDPH guidance</p> <p>To return to school: Please see the chart on Page 28 for direction on distinguishing between high-risk and low-risk symptoms. All symptomatic persons (eg, one high-risk or two low-risk symptoms) should be tested for Covid-19.</p> <ul style="list-style-type: none"> • If they test positive, they can return to campus 10 days after symptoms started, 24 hours without fever, and improving symptoms. (There is no requirement for 24 hours of improving symptoms). • If they test negative, they can return 72 hours after symptoms resolve. <p>All persons in the COVID-positive person’s Stable Group and any other close contacts must be tested for COVID per the testing guidelines, above.</p> <ul style="list-style-type: none"> • If student/staff tests positive, see Scenario 3. • If student/staff tests negative, see Table 2 below. <p>In addition, the individual may have a medical note by a physician that provides an alternative explanation for symptoms and reason for not having a COVID-19 test (e.g., seasonal allergies)</p> <p><u>School site will remain open</u></p>	<p>COVID-19 symptoms letter provided to the individual or individual’s guardian (See Appendix E)</p>



SCENARIO 2: FAMILY MEMBER OR CLOSE CONTACT (OUTSIDE COMMUNITY) TESTS POSITIVE**Student/staff sent home
RD & COVID-19 School Liaison notified**

Student/staff instructed to quarantine/monitor for symptoms, even if they test negative, for a full 10 days after last exposure to the person testing positive for COVID.

Household contacts can end quarantine 10 days after their last exposure to the positive household member.
If the infected household member isolates in their own bedroom with their own bathroom, the exposed person's quarantine can be concurrent with the infected person's isolation.

School site will remain open

Student (Guardian) or Staff: Immediately notify the COVID-19 School Liaison if they are defined as a close contact of a confirmed case
([See Appendix E](#))

SCENARIO 3: STUDENT OR STAFF MEMBER TESTS POSITIVE

**Student/staff sent home, if not already at home.
School administration, RD, and county COVID-19 School Liaison notified.
Public Health – School Unit (Name of County) notified;
Close off and clean any areas used by the person who tested positive, per [CDPH](#) and [CDC](#) guidance**

Student/staff that tested positive:

- Positive persons must isolate for 10 days from symptom onset go 24 hours without fever (without fever-reducing medication) and demonstrate improving symptoms.

School-based close contacts:

- identified and instructed to self-quarantine and monitor symptoms for 10 days.
- Close contacts include the entire Stable Group, their household and any non-Stable Group members who have been within 6 feet for 15 minutes or more over a 24-hour period.
- Even if a Stable Group maintains 6 feet of distance, the prolonged duration of indoor exposure warrants quarantine.

*Close contacts should be tested, whether they have symptoms or not. Testing does not shorten the quarantine requirement.

School site will remain open

COVID-19 positive Individual: Notify school administration and/or COVID-19 School Liaison immediately

School Site:

- Contact County Public Health
- Close Contact letter and Self-Quarantine Instructions sent to school close contacts within 48 hours.
([See Appendix E](#))



Steps to Take in Response to Negative COVID-19 Test Result (TABLE 2)

A student or staff member tests negative for COVID-19 after Scenario 1 (symptomatic)	
IMMEDIATE ACTIONS	COMMUNICATION
<ul style="list-style-type: none"> If a symptomatic school member testing negative had a known close-contact exposure to a COVID-positive person, they must complete a 10-day quarantine, even with a negative test. If the symptomatic person testing negative did not have a known exposure, they can return to school 72 hours after their symptoms resolve. 	Student family/staff to bring evidence of negative COVID-19 test or medical note if testing not performed
A student or staff member tests negative after Scenario 2 (close contact)	
<ul style="list-style-type: none"> Student/staff must remain in quarantine for a full 10 days after the date of last exposure to COVID-19 positive non-household contact. Household contacts can end quarantine 10 days after their last exposure to the positive household member. If the infected household member isolates in their own bedroom with their own bathroom, the exposed person's quarantine can be concurrent with the infected person's isolation. 	No action is needed
A student or staff member tests negative after routine surveillance testing (no symptoms and no close contact to a confirmed COVID-19 case)	
Can return to school/work immediately	No action is needed

Chart adapted from **COVID-19 and Reopening In-Person Learning Framework for K-12 Schools in California, 2020-2021 School Year** July 17, 2020



Additional Details

Distance Learning

Support students who are at higher risk for severe illness or who cannot safely distance from household contacts at higher risk, by providing options such as virtual learning or independent study (see Appendix D)

School Closure and Subsequent Reopening: The Catholic School Department in consultation with Public Health, will determine if a partial or full school closure is needed based on [guidance](#) and [recommendations](#) from CDPH. Both the school and the county must meet current state guidance to reopen. The most current guidance is:

Local Criteria for Closure and Re-opening in response to COVID-19 Cases:

- a) Individual School Closure: Closure is recommended based on the number of cases, the percentage of the teacher/students/staff that are positive for COVID-19, and following consultation with the County Health Officer. For example, school closure may be appropriate in any of the following scenarios:
 - i) Multiple cases in multiple Stable Groups at a school
 - ii) There are at least 10 cases or 5 percent of the total number of teachers/student/staff cases within a 14-day period, depending on the size and physical layout of the school.
 - iii) Public health investigation or other local epidemiological data results in the County Health Officer recommending school closure.
- b) Reopening: Public Health and the school will be in communication throughout this process. School and school districts can typically reopen after 14 days and the following:
 - i) Cleaning and disinfection have occurred;
 - ii) Public health investigation is complete
 - iii) Local public health is consulted and has no concerns with re-opening.



SAFE ENVIRONMENT

The safety of our employees and students is our first priority. Upon reopening, our schools have been completely cleaned and disinfected and we will continue to adhere to all necessary safety precautions. Sites have considered the CDC guidelines for reopening buildings after an extended closure (see <https://bit.ly/cdcwater>). In addition, the process outlined below will routinely serve to protect everyone and reduce the risk of spread of Infection.

General Disinfection Measures

“Cleaning” involves water and soap or a detergent, does not use disinfecting agents, and significantly decreases germs on surfaces and decreases infectious risks. “Disinfection” kills germs on surfaces using specific agents (see below for those approved for use). If a case has been identified, the spaces where the case spent a large proportion of their time (e.g., classroom, or administrator’s office if an administrator) should be disinfected. Frequent disinfection can pose a health risk to children and students due to the strong chemicals often used and so is not recommended in the school setting unless a case has been identified.

- Staff should clean frequently-touched surfaces at school and on school buses daily. Frequently touched surfaces in the school include, but are not limited to:
 - Sink handles;
 - Shared tables, desks, or chairs.
 - If a school has morning and afternoon stable groups, the desks and tables are considered shared and should be cleaned before the next group arrives.
 - Desks or chairs do not need daily cleaning if only used by one individual during the day.
 - Door handles.
 - Shared technology and supplies.
- If used, outdoor playgrounds/natural play areas only need routine maintenance. Make sure that children wash or sanitize their hands before and after using these spaces. When hand hygiene is emphasized, cleaning of outdoor structures play is not required between Stable Groups.
- Custodial staff and any other workers who clean and disinfect the school site must be equipped with proper personal protective equipment, including gloves, eye protection, respiratory protection, and other appropriate protective equipment as required by the product instructions. All products must be kept out of the reach of children and stored in a space with restricted access.



- Establish a cleaning schedule in order to avoid both under- and over-use of cleaning products.
- Ensure safe and correct application of disinfectant and keep products away from students.
- Ensure proper ventilation during cleaning and disinfecting. Introduce fresh outdoor air as much as possible for example by opening windows where practicable. When disinfecting, air out the space before students arrive; disinfection should be done when students are not present.

Product Guides

Hand Sanitizer

- Ethyl alcohol-based hand sanitizers are preferred and should be used when there is the potential of unsupervised use by children.
- Isopropyl hand sanitizers are more toxic when ingested or absorbed in skin.
- Do not use hand sanitizers that may contain methanol, which can be hazardous when ingested or absorbed.

Cleaner

- When choosing disinfecting products, **use** those approved for use against COVID-19 on the **Environmental Protection Agency (EPA)- approved list “N,”** and **avoid** products that contain peroxyacetic (peracetic) acid, sodium hypochlorite (bleach), or quaternary ammonium compounds, which can cause asthma.
- To reduce the risk of asthma and other health effects related to disinfection, programs should select disinfectant products on list N with asthma-safer ingredients (hydrogen peroxide, citric acid, or lactic acid) as recommended by the US EPA Design for Environment program.
- Follow label directions for appropriate dilution rates and contact times. Provide workers training on the chemical hazards, manufacturer’s directions, Cal/OSHA requirements for safe use, and as applicable and as required by the Healthy Schools Act.



General Disinfection Measures

Category	Area	Frequency
Workspaces	Classrooms, Offices	At the end of each use/day
Appliances	Refrigerators, Microwaves, Coffee Machines	Daily
Electronic Equipment	Copier machines, Telephones, Keyboards	At the end of each use/day and/or between use
General Used Objects	Handles, Light switches, Sinks, Restrooms	After each recess
Common Areas	St. Pauls Room, Gyms, Common Areas	At the end of each use/day; between groups

Additional cleaning guidance available at <https://bit.ly/covidcdcclean>

Safe Water

- Use of drinking fountains is suspended; water bottle filling stations are provided.
- Flushing our water system and additional measures as needed have been taken per CDC guidelines to minimize the risk of Legionnaires' disease and other diseases associated with water.

HVAC Considerations

- Fresh outdoor air is introduced as much as possible - when using air conditioning, the setting that brings in outside air is used
- If opening windows poses a safety or health risk (e.g., by allowing pollen in or exacerbating asthma symptoms) to persons using the facility, we have considered alternatives such as installing portable high-efficiency air cleaners, upgrading the building's air filters to the highest efficiency possible, and making other modifications to increase the quantity of outside air and ventilation in classrooms, offices, and other spaces.
- Replace and check air filters and filtration systems to ensure optimal air quality on a schedule
- Ensure proper ventilation during cleaning and disinfecting
- When cleaning, air out the space before children arrive; plan to do a thorough cleaning when children are not present
- Specific practices to avoid:
 - Classrooms with no ventilation.



- Classrooms with increased airflow across occupants (e.g., air conditioners or fans blowing into the classroom or overhead fans creating air currents across occupants).

School Procured Additional Supplies

Item	Quantity	Notes
Hand Pump Sprayer	1/classroom	For teacher use, to spray desks for students to wipe down.
Staff Gloves	500 count/class	Nitrile gloves
Bulk Hand Sanitizer		55-gallon drums for refill stations
Individual Pumps	1/person	8oz
Cleaning Solution	Refillable spray	Alcohol-based
IR Therm	1 per class	In each classroom / one in office
Water bottle filler	1	In parking lot by O'neil entrance door
Acrylic/Plexiglass		Classrooms with tables
Student Towels/ Ziplock Bags		For cleaning personal work surface and storing clean and soiled towels .
Disinfectant wipes per classroom		Refilled as needed

Supplies Provided by Families/Students

Most student supplies will be purchased in bulk by the school in order to make sure all students have the same supplies and will not share them.

Item	Quantity	Notes
Water bottle	1	With drinking fountains turned off, students will be encouraged to fill bottles at home.
Backpack	1	Backpacks will be hung on hooks or on the



Clean cloth face mask	1	Students will wear a mask daily

FACILITY ADJUSTMENTS

- Student desks will be designated for each person and desks will be spread out to maximize space.
- Windows will be opened for proper ventilation.
- Classroom rugs, group tables, and superfluous furniture will be removed and individual desks installed with sneeze guards .
- Students have their own designated desk with their own supplies, water bottle, cleaning materials, and hand sanitizer.
- Classrooms with tables have plexiglass dividers and individual sneeze guards
- Teachers will utilize outdoor space as much as possible.
- Extended Care, the St Pauls Room , and the Science Lab will be used to accommodate sub Stable Groups for Extended Care
- Touchless soap dispensers and paper towel dispensers installed. Touchless hand sanitizer stands in entry ways of each floor

SCHOOL SCHEDULE & ROUTINES

Morning Drop-Off

Drop-Off Hours: 8 AM - 8:15 AM

Protocol: Cars will enter through the entrance gate on Florida Street. There will be two lines of cars formed in the parking lot. Cars will drive up to the cross walk. Students will open their own car and a staff member will greet them and take their temperature. Students will then close their own car door. Students will walk around their car to the cross walk and then walk to O'Neill Building. Students in Kindergarten, First, Sixth and eighth will end you through the South Door. Students in Second, Third and Seventh will enter through the Main Door. Students in Fourth and Fifth will enter in the North Door.



Lunch & Recess Schedule

Schedule:

Time	Activity	Grade Level
10:30 -10:45	Recess	1-3
10:45-11	Recess	4-5
11:50-12:10	Recess	5-8
11:50-12:10	Lunch	1-4
12:10-12:30	Lunch	5-8
12:10-12:30	Recess	1-4
12:10-12:30	Lunch	Kindergarten
12:30-12:50	Recess	Kindergarten

Protocol: Students will eat lunch at their assigned seats in their classrooms. Teacher assistants and staff will supervise in their classroom and two staff members will be outside with each grade level group during their recess time. A staff member will deliver FOOD FOR THOUGHT hot lunches to students in their classroom. Students will put their trash in their classes trash can. Students will continue to have recess in separate areas of the parking lot (area 1, area 2, area 3, area 4) . Each grade rotates their area per week.

Recesses and Physical Education

Staffing: Teachers and Aides

Protocol: Recesses and Physical education will be similarly structured, limiting free play to ensure distancing. Activities such as jump rope, calisthenics, etc. will be the standards. Each classroom will have their own recess equipment to take outside .

After School Pick-Up

Time: 3:00 PM - 3:15 PM

Staffing: Teachers

Protocol:



Kindergarten is dismissed at 2:30pm, families will park on Florida St and walk up to pick their child up from the parking lot. Families will then return to their cars. Those with older children can come into the parking lot once the gate is open.

Protocol: The campus gate will be opened at 2:45pm. Parents will not be admitted prior into the school office. Students will line up outside, on the grade lines, and then walk to their car. Parents will remain in their cars and not be allowed to walk over to get their child/children. Additional staff will help students in seeing their car.

Extended Care

Hours of Operation: Morning Shift 6:45 AM - 7:55 AM;
Afternoon Shift 2:30- for Kindergarten, 3:15 PM - 6:30 PM

Staffing: School employees

Protocol: We will use the Extended Classroom, St Paul's conference room and Science Lab. Students will have either assigned desks or be spaced out on the tables in the St Paul's Conference Room. Each student will have their own supplies. Parents will pick up and drop off at the O'neil glass door entrance; they will not be admitted into either room.

Music and Library

Protocol: Students will only be allowed to sing for music outside. Books will be checked out by the Librarian and delivered to the students in their classroom.

Masses

When the county is in the Red Tier on the county risk level map students will participate in indoor masses. Students will sit in their grade level Stable Groups. The grade rotation will be K-2, 3-5, and 6-8. If the County moves to the Purple Tier, then students will not be attending Mass.



APPENDIX A: FAQ

What if a student arrives late?

Students will enter through the Kentucky St door and be walked over to the O'Neill Building by the office staff.

What if a student needs to use the restroom?

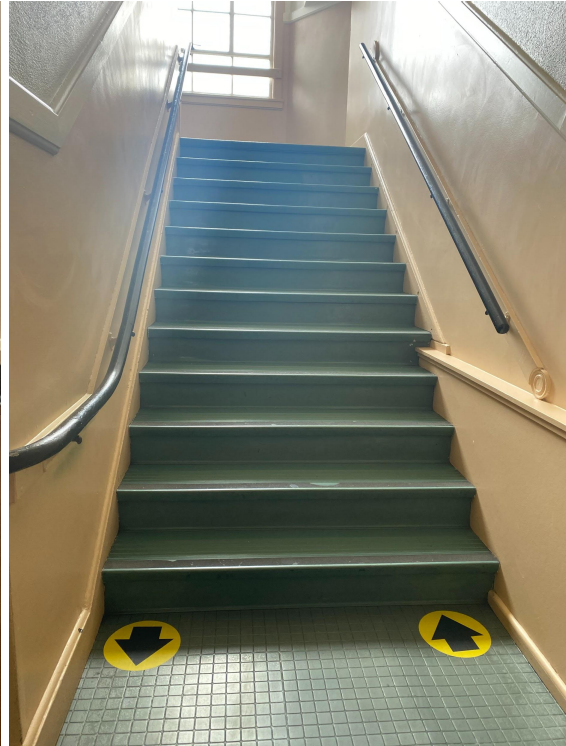
Restroom time is scheduled for Stable Groups on an hourly basis to support social distancing, use outside the allotted time will still entail social distancing, and follow restroom sanitation protocols.

What is the plan for inclement weather recess and physical education?

The gymnasium will serve as the space designated for when it rains, is too hot, or the air quality prohibits being outside; however, just like recess, it will be used by one class at a time.



APPENDIX B: FACILITY ADJUSTMENTS



Daily Health Screening (Adults)

Name: _____

Position: _____

Supervisor's Name: _____

Q1: Since your last time on campus, have you had a cough, shortness of breath, difficulty breathing, or been in close contact with a person lab confirmed to have COVID-19?

If yes, circle what applies above and see your supervisor immediately.

Q2: Since your last time on campus, have you had any two of these symptoms

Fever	Muscle pain	Sore throat
Chills	Headache	New loss of taste or smell
Repeated shaking with chills	Fatigue	Cough
Shortness of breath/difficulty breathing	cough	Nausea or vomiting

If yes, circle symptoms and see your supervisor immediately.

Date	Temp	Symptoms (Y/N)	Screened by	Signature

< OFFICE USE ONLY >

If a person is exhibiting symptoms or exceeds the body temperature allowable by Solano County they will be instructed to go home or to the nearest health center.

Then, complete the following section of this form:

Date the employee was sent home: _____ Recorded temperature: _____

Are visible signs of respiratory illness present? ____ Yes ____ No

Date the employee returned to work: _____

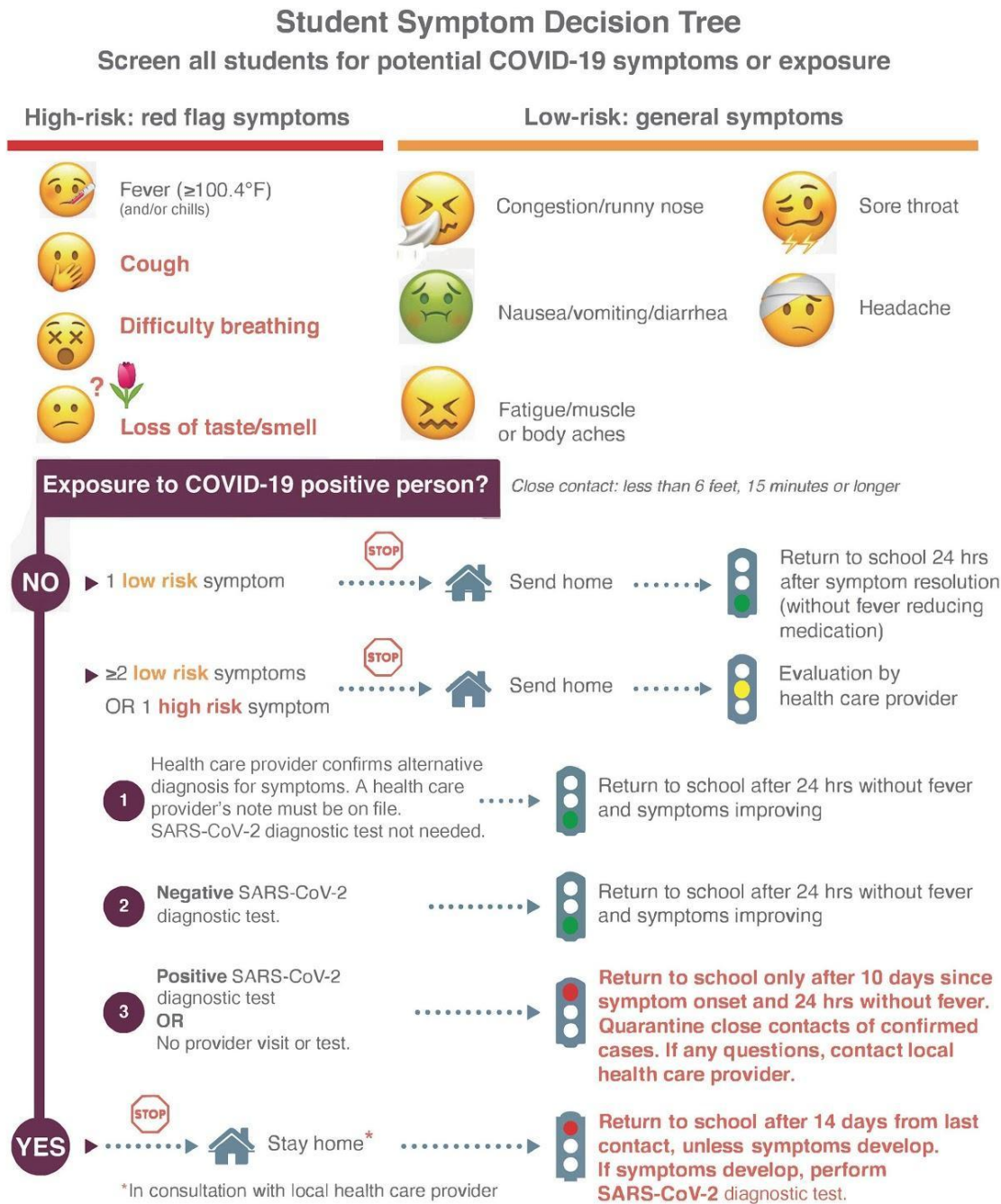


APPENDIX C: PROTOCOL SIGNAGE

- [Classroom Cleaning](#)
- [Classroom End of Day](#)
- [Classroom Good Morning](#)
- [Campus Entry](#)
- [Restroom Use](#)
- [Surface Cleaning](#)
- Facility Signs:
 - [1](#)
 - [2](#)
 - [3](#)
 - [4](#)
 - [5](#)
 - [6](#)
 - [7](#)
 - [8](#)
 - [9](#)



Student Symptom Decision Tree



*This care pathway was designed to assist school personnel and is not intended to replace the clinician's judgment or establish a protocol for all patients with a particular condition.
 Diagnosis and treatment should be under the close supervision of a qualified health care provider.
 Guidance might change ;Revision date 10/2/2020*



APPENDIX D: AGENCY UPDATES

[CDPH Consolidated Schools Guidance from January 14, 2021](#)

[CDPH School Reopening Status Reporting Letter of January 14, 2021](#)

[CDPH Case Reporting By Schools Letter of January 14, 2021](#)

[CDPH Quarantine Rules Updated December 14, 2020](#)

Solano County COVID Community Testing

Information for students and families:

https://www.solanocounty.com/depts/ph/coronavirus/links/faq_community_testing_sites.asp

CA Department of Public Health Guidance

<https://covid19.ca.gov/pdf/guidance-schools.pdf>

CDC Decision-Making Tree

<https://www.cdc.gov/coronavirus/2019-ncov/community/schools-childcare/Schools-Decision-Tree.pdf>

Campus Access

- [CDC: What to Do If You Are Sick](#)
- [CDC: People Who Are at Higher Risk for Severe Illness](#)

Hygiene and PPE

- <https://www.cdc.gov/handwashing/index.html>
- [CDC: Hygiene Practices](#) (PDF)
- [CDC: Using Personal Protective Equipment \(PPE\)](#)
- [CDC: Use of Cloth Face Coverings to Help Slow the Spread of COVID-19](#)

Cleaning and Disinfecting



- [EPA: 6 Steps for Safe and Effective Disinfectant Use](#) (PDF)
- [EPA: List N - Disinfectants for Use Against SARS-CoV-2](#)

Information for Staff Training

- [Healthy Schools Act](#) (PDF)
- [CDC: Interim Infection Prevention and Control Recommendations for Patients with Suspected or Confirmed Coronavirus Disease 2019 \(COVID-19\) in Healthcare Settings](#)



Communication with School Community

- [CDC: Criteria to Discontinue Home Isolation](#)
- [CDC: Public Health Recommendations for Community-Related Exposure](#)

Food Services

- [Student Meals Cal/OSHA Guidance for Restaurants](#)



Workplace Reporting



COVID-19 Workplace Exposure Reporting

To ensure the health and safety of employers, employees, and community members, businesses and activities must immediately report any confirmed cases of COVID-19 to Yolo County Public Health.

Yolo County Public Health Requires ALL Businesses to take the following actions

1. FOLLOW



FOLLOW California COVID-19 Industry Guidance for clear recommendations and tasks to prepare your businesses <https://covid19.ca.gov/industry-guidance/>.

2. REPORT



REPORT confirmed COVID-19 cases to the Yolo County Public Health by calling the COVID Provider Line at: **(530) 666-8614**.

- Leave a message; staff review messages everyday.
- Include in the message your business name, city, point of contact, and a brief situational update (ex. 3 employees out with fever and cough, one employee reporting a positive COVID-19 lab test)

3. PREPARE



PREPARE for Public Health to call. You can prepare by:

- Completing the Yolo County Workplace COVID Toolkit (located at www.yolocounty.org/coronavirus-roadmap) to identify close contacts (those within 6 ft. for 10 min. or more) of an infected employee.
- Starting to take steps to isolate close contacts if they are still at work; or if this is not possible, send home to isolate.

For additional information on COVID-19, the "Roadmap to Recovery" plan, or face covering guidance visit www.yolocounty.org/coronavirus-roadmap.

Yolo County • www.yolocounty.org • Yolo 2-1-1



APPENDIX E: COMMUNICATIONS

Cases and Exposures Correspondence

Note: We provide these letters as models for correspondence. We may modify them in collaboration with County Health as appropriate.

Confirmed Case Letter

[School Letterhead]

[Date]

Dear (Name of School) School Parents/Guardians:

The health and safety of our students and staff are our top priority. This letter is to inform you that an individual at (Name of School) School has tested positive for COVID-19. The last date of known exposure at the school was [date].

While our investigation did not identify your child as having close contact with the individual during the infectious period, we want to maintain transparent communication with families. Due to the potential of exposure to COVID-19 that we all face in the community, please continue to monitor your student for symptoms and keep them home if they are experiencing COVID-19 symptoms: fever, chills, fatigue, muscle or body aches, headache, sore throat, new loss of taste or smell, nasal congestion or runny nose, nausea or vomiting, or diarrhea (or found online [here](#)). If your child develops symptoms consistent with COVID-19, contact your healthcare provider. Your healthcare provider will determine if your child needs a COVID-19 test.

(Name of County) County Public Health has been notified. (Name of School) School and Public Health are working closely together to take the necessary steps to protect our community and prevent the spread of COVID-19 in school. In accordance with Public Health guidance, school will continue to operate in-person instruction. Individuals that were determined to be close contacts to the individual who tested positive have been notified to stay home.

If you have any health-related questions, please contact your healthcare provider. If you have any school related questions, please contact your COVID-19 School Liaison, name. Additional resources can be found at the following website:

(Insert County COVID-19 Portal Page Here)

Thank you for your flexibility and ongoing support of safety measures that allow our students to continue to learn.

Respectfully,

[Principal Name and Contact Information]



Close Contact Letter

[School Letterhead]

[Date]

Dear Parents/Guardian of _____ (student name):

This letter is to inform you that your child has been identified as a close contact to an individual who has tested positive for COVID-19 during the infectious period. A close contact is defined as someone who was within 6 feet of an infected person for at least 15 minutes or more over a 24-hour period. The last date of known exposure was ____[date].

[Name of County] County Public Health advises that your child immediately stay at home, except to get medical care, even if they do not have symptoms. Additional information is included in the Self-Quarantine document being issued to your child. During your child's self-quarantine, do not allow non-household members into your home, and if there are household members who are medically frail or elderly they should stay separated from your child.

Please follow the directions in the attached Self-Quarantine from [Name of County] County Public Health. If your child develops symptoms consistent with COVID-19, contact your healthcare provider. Be sure to let the provider know that your child has had direct exposure to someone that has tested positive to COVID-19 through school. Your healthcare provider will determine if your child needs a test.

Although other household members are not on quarantine, everyone should continue practicing prevention measures when out in the community, including washing your hands with soap and water frequently, using a face mask, avoiding large gatherings, and practicing social distancing.

If you have health-related questions, please contact your healthcare provider. Additional resources can be found at:

- [Insert County COVID-19 portal page link here]
- Centers for Disease Control and Prevention (latest information on symptoms, how to protect other household members, cleaning, and more): www.cdc.gov/coronavirus
- (Updates about our school's situation)

The health and safety of our students and staff are our top priority. Thank you for your prompt attention to this matter.

Respectfully,

[Name and contact information of principal]



Symptoms Letter

[School Letterhead]

Dear Parent or Guardian:

This letter is to inform you that your student feels unwell and has shown symptoms that are similar to COVID-19 per county guidelines. In order to best care for all students and staff, your student is being sent home today.

To return to school, wait at least 10 days after symptom onset, 24 hours with no fever (and no fever reducing medication), and improvement in other symptoms. If medical attention is needed, households should contact their healthcare provider. Your healthcare provider will determine if your child needs a COVID-19 test. If your student tests positive, please notify school administration immediately. If your student tests negative for COVID-19, they should remain home at least 24 hours with no fever (without fever reducing medicine) and symptoms improvement. If testing was not done, the individual may have a medical note by a physician that provides alternative explanation for symptoms and reason for not having a COVID-19 test or, follow the 10 days after symptom onset, 24-hour fever-free rule outlined above.

Our Remote Learning Liaison will connect with you ASAP to discuss providing instruction during this hiatus.

If you have any health-related questions, please contact your healthcare provider. If you have any COVID-19-related questions, please contact name. Additional resources can be found at the following website:

- [Insert county COVID-19 portal page link here]

The health and safety of our students and staff are our top priority. Thank you for your prompt attention to this matter.

Respectfully,

[Principal name and contact information]



Scenario 3 - Quarantine Letter



DIOCESE of SACRAMENTO
CATHOLIC SCHOOLS

August ZZ, 2020

Dear X School Parent or Guardian,

This letter serves as notification that a student or staff member of your Stable Group at [Name of School] School has tested positive for COVID-19. The date of possible on-campus contact was August ZZ, 2020. The following measures were taken, in keeping with Scenario 3 of our Return-to-School Plan Protocol:

- School Administration, the Regional Director, the school contact tracer, [Name of County] County Public Health, and I were notified.
- The areas used by the person who tested positive were closed off and thoroughly cleaned per [CDPH](#) and [CDC](#) guidance.
- The Student or staff member that tested positive will isolate for 10 days after symptoms onset or test date. In order to return to campus, positive persons must isolate for 10 days from symptom onset and go 24 hours without fever (without medication) and demonstrate improving symptoms.

The members of your family who were on campus that day must quarantine and monitor for symptoms for a full 14 days after August ZZ. Testing does not shorten the 14-day quarantine.

Please note that all information, including the name(s) of reporting individuals, is confidential.

For additional information about COVID-19, please visit the [CDPH](#) and [CDC](#) guidance websites.

The health and safety of our community are our priority. We greatly appreciate everyone's efforts in staying informed, calm, and thoughtful as we all do our part to help keep our communities and schools stay safe.

If you have any questions or concerns, please contact principal [insert principal name and contact information here].

Sincerely,

Lincoln Snyder
Superintendent and Executive Director of Schools
The Diocese of Sacramento



V9.1 St. Vincent Ferrer School (Service, Virtue, Faith and Scholarship)

APPENDIX G: Distance Learning

The Distance Learning opportunities provided by Saint Vincent Ferrer School are intended to keep us safely in community.

Distance Learning Outline

A. Campus open - Our primary goal is to provide a quality education while in community. Independent, remote learning will be available for students in at-risk scenarios through their regular classroom teacher, in addition to a support/liaison teacher to ensure connectivity. Modes of instruction provided will include live stream lessons, recorded sessions, and scheduled check-in times. This program will provide seamless reentry to an on-site experience for that child when the time comes to return.

B. Stable Group Distance Learning - If the health department sends a Stable Group to distance learning, the entire stable group will be provided with a daily program that will include live stream lessons and a regular period by period schedule.

C. Campus closed - The entire school will move to distance learning if the campus is closed by the health department, similar to the Stable Group scenario, but with additional whole school content such as streamed announcements, masses, assemblies, and prayer services. Students on independent, remote learning will be folded into the whole site distance learning program.

Distance Learning School-wide Guidelines

Attendance

Students are expected to be "present" for classwork on weekdays per our school calendar. Daily schedules for minimum days will be adjusted. If it is a "No school day" there will be no Distance Learning. There needs to be some evidence of completed student work, such as attending a Zoom meeting or submitting work via an online platform, in order to be marked "present" for the day.



Classwork

Every morning you will find assignments listed on SchoolSpeak and Google Classroom (Teachers will post weekly lessons or daily lessons by 8 am for the day) If you don't get an email, please go directly to the SchoolSpeak class page for information. Students will have Reading, Writing, Math, Religion and Social Studies and/or Science each day.

Communication

- Teachers will send out the weekly lesson plan formats or daily lessons by 8am daily, so all families will know the schedule, important dates, curriculum time frames, enrichment class times and other pertinent information.
- Classroom teachers and aides will be available to respond to students' questions, concerns and needs during the school hours of 8:00-3:00 pm.
- Teachers will respond to emails within a 24 hour period, at least acknowledging receipt of the email. (An example, thank you for your email. I will take some time to gather more information and get back to you.)
- Teachers will schedule at least weekly check-ins with all students, can be done in small groups or whole class
- Office hours should be scheduled regularly with students, once a week
- The principal will communicate with parents through SchoolSpeak weekly

Online Safety Protocols

- Our policy is no 1:1 interactions between students and teachers in online platforms such as live conferencing or email. During Zoom or anything of the like (real time video), it should be a group of students or the entire class interacting with the teacher and not 1:1 live conferencing. Email communications should be sent by a parent on behalf of the student. Students should not use their personal email accounts to contact a teacher. For everyone's protection, we want to prevent one adult with one minor. If only one child needs help, we recommend having another person (parent) in the video conference. Please remind your parents that we encourage vigilance in supervising their child's use of technology and engagement with peers and others, especially after school hours.

Delivery of Instruction

- Teachers in the Diocese of Sacramento will provide a hybrid of synchronous and asynchronous learning for students.
- **Asynchronous instruction** provides a learning environment that does not require teachers and students to be online at the same time. Since teachers, students, and families are all working on various childcare and work schedules, this is an essential part of the Distance Learning Plan.



- **Asynchronous lessons** 5 days a week (recorded lessons, independent assignments, etc)
 - To provide flexibility to a learners schedule
 - To build background prior to a live lesson
 - To reinforce already taught lessons
 - When students will benefit from repeated instruction
 - To help differentiate when learners can stop, start and rewatch a lesson
 - Should be coupled with real-time interactions
- **Synchronous, real-time instruction** provides opportunities for students to participate in interactions with their teachers and classmates in real time.
 - **Synchronous Lessons** 5 days a week (live lessons)
 - To create feelings of community
 - When direct instruction is best
 - When conversation or opportunities to ask questions will benefit the learners
 - To promote collaboration
 - To prevent misunderstandings
 - To review a video or follow up an assignment
 - To allow teacher to give and get instant feedback, and check for understanding

Independent, Remote Learning for At-Risk Students

Overview

Program Intent

Our school emphasizes local, personal interaction through an in-person community. A homeschool program is limited and is not our mission. Still, when health considerations necessitate learning from a distance, we will serve our families and keep them connected to their community with an independent, remote learning program.

Content

Instruction in math, language arts, science, religion, and social studies will be provided to all students. Remote learning students can also have Spanish and PE Enrichment.

Roles and Responsibilities

Classroom Teacher

Generates core content and provides feedback to all students (on and off-site) in the regular grading cycle. Is available to all parents in a regular fashion (phone, email,



appointment). Posts content for Teacher Liaison review a week in advance for collaborative and clarification purposes.

Student

Keeps to their schedule by starting each day on Google classroom with the morning announcements, attends their remote lessons, and progresses through the content at their pace during the day content is assigned.

Next Steps & Additional Information

Should your child's Stable Group or the school move to distance learning, this remote learning schedule would change to a full distance learning schedule (more streamed course content, etc.)

For additional questions or to sign-up for this program, please email jessica.dare@svfsvallejo.org or call the office: (707)642-4311

APPENDIX F: APPLICATION FOR WAIVER

In counties on the monitoring list, CDPH guidance allows elementary schools to request a waiver from the local health officer to open for in-person instruction. To receive a waiver, the superintendent (or equivalent for charter or private schools) must consult with labor, parent, and community organizations prior to submitting a waiver application. The local health officer then reviews the application, along with local community epidemiological data, and consults with CDPH about the request.

Waiver Application Cover Form

(for use by a Local Education Agency or equivalent)

Please submit one application for each local educational agency or equivalent. If applying on behalf of a school district, please submit one application for elementary schools in the district that are seeking to reopen for in-person instruction. If applying for an independent, private, faith-based, or charter school, please submit an application for each school.

Background Information

Name of Applicant (Local Educational Agency or Equivalent):

School Type:

Traditional Public School Charter School Private, Independent, or Faith-Based School

Number of schools: Enrollment:

Superintendent (or equivalent) Name:

Address:

Grades/Number of Students Proposed to be Reopened:

TK K 1st 2nd 3rd 4th 5th 6th



Date of Proposed Reopening:

Name of Person Completing Application:

Phone Number: Email:

I. Consultation

1. Faculty and staff: By August 14, 2020, each principal will hold a meeting with his or her faculty. During that meeting, he or she will:
 - a. Present an introductory message from Lincoln Snyder and a public service announcement from Dr. Daniel McCrimons.
 - b. Provide an electronic copy of his or her school's Return-to-School plan to each employee.
 - c. Review his or her school's Return-to-School plan in detail.
 - d. Hold an open forum in which he or she records and answers any questions or concerns.
 - e. Makes himself or herself available at a scheduled time for follow-up conversation and questions.
2. Parent organizations: Before August 14th, each principal will hold an online meeting with his or her Catholic School Advisory Committee. During that meeting, he or she will:
 - a. Present an introductory message from Lincoln Snyder and a public service announcement for parents from Dr. Daniel McCrimons.
 - b. Provide an electronic copy of his or her school's Return-to-School plan to each CSAC member.
 - c. Review his or her school's Return-to-School plan in detail.
 - d. Hold a question-and-answer session in which he or she records and answers any questions or concerns.
 - e. Make himself or herself available at a scheduled time for follow-up conversation and questions.
 - f. Following the meeting, the principal will share a copy of the Return-to-School Plan with the parent population and post the plan prominently on the school website.
3. Community Organizations:
 - g. Following the same agenda as above, during the month of August, the principal will meet with the Parish Pastoral Council and other significant community entities that operate in or on the parish grounds (as determined by the principal and pastor) to present the Return-to-School plan.
 - h. On August 5, the Catholic School Department held an informational meeting with the Parochial Athletic League athletic directors to present on the Return-to-School Plan and discuss the most recent state guidelines for sports and outdoor activities.
2. Principals will document the dates of all meetings on their website.
 - a. Faculty and staff meetings held 8/6
 - b. Parent Meeting August 25th



- c. Parish Council meeting held September 3rd

II. Elementary School Reopening Plans

Please confirm that elementary school reopening plan(s) addressing the following, consistent with guidance from the California Department of Public Health and the local health department, have been published on the website of the local educational agency (or equivalent): All reopening plans for schools of the Diocese of Sacramento are available on the diocesan website (www.scd.org/schools).

☐ **Cleaning and Disinfection:** How shared surfaces will be regularly cleaned and disinfected and how use of shared items will be minimized.

Go to: [Safe Environment](#) and [Shared Spaces](#)

☐ **Stable Group:** How students will be kept in small, stable groups with fixed membership that stay together for all activities (e.g., instruction, lunch, recess) and minimize/avoid contact with other groups or individuals who are not part of the Stable Group.

☐ **Entrance, Egress, and Movement Within the School:** How movement of students, staff, and parents will be managed to avoid close contact and/or mixing of Stable Group.

Go to: [Schedules and Routines](#)

☐ **Face Coverings and Other Essential Protective Gear:** How CDPH's face covering requirements will be satisfied and enforced.

Go to: Personal Protective Equipment (PPE)

☐ **Health Screenings for Students and Staff:** How students and staff will be screened for symptoms of COVID-19 and how ill students or staff will be separated from others and sent home immediately.

Go to: [Screening](#) and [COVID Symptoms and Case Response](#)

☐ **Healthy Hygiene Practices:** The availability of handwashing stations and hand sanitizer and how their use will be promoted and incorporated into routines.

Go to: [Safe Environment](#)

☐ **Identification and Tracing of Contacts:** Actions that staff will take when there is a confirmed case. Confirm that the school(s) have designated staff persons to support contact tracing, such as creation and submission of lists of exposed students and staff to the local health department and notification of exposed persons. Each school must designate a person for the local health department to contact about COVID-19.

Go to: [COVID Symptoms and Case Response](#)

☐ **Physical Distancing:** How space and routines will be arranged to allow for physical distancing of students and staff.



Go to: [Social Distancing](#) & [Shared Spaces](#)

☐ **Staff Training and Family Education:** How staff will be trained and families will be educated on the application and enforcement of the plan.

Go to: [Staff Training and Family Education](#)

☐ **Testing of Students and Staff:** How school officials will ensure that students and staff who have symptoms of COVID-19 or have been exposed to someone with COVID-19 will be rapidly tested and what instructions they will be given while waiting for test results. Describe how staff will be tested periodically to detect asymptomatic infections.

Go to: [COVID Symptoms and Case Response](#)

☐ **Triggers for Switching to Distance Learning:** The criteria the superintendent will use to determine when to physically close the school and prohibit in-person instruction.

Go to: [COVID Symptoms and Case Response](#)

☐ **Communication Plans:** How the superintendent will communicate with students, staff, and parents about cases and exposures at the school, consistent with privacy requirements such as FERPA and HIPAA. Go to: Appendix E: Communications

Additional Resources:

CDPH and Cal/OSHA Guidance for Schools and School-Based Programs

<https://files.covid19.ca.gov/pdf/guidance-schools.pdf>

California Department of Education Stronger Together: A Guidebook for the Safe Reopening of California's Public Schools

<https://www.cde.ca.gov/ls/he/hn/strongertogether.asp>

CDPH COVID-19 and Reopening In-Person Learning Framework for K-12 Schools in California, 2020-2021 School Year

<https://www.cdph.ca.gov/Programs/CID/DCDC/CDPH%20Document%20Library/COVID-19/Schools%20Reopening%20Recommendations.pdf>



APPENDIX G: POST-BREAK QUESTIONNAIRE

Diocese of Sacramento Catholic Schools - Post-Easter-Break Questionnaire:

February 1, 2021

In order for your child(ren) to return to on-campus learning following Easter break, please answer the following questions:

1. In the last ten days, my child(ren) has (have) been in contact with someone who currently has tested positive for COVID-19.

☐ Yes (True) ☐ No (False)

If you answered "yes," your child will need to quarantine for ten days from last contact, unless symptoms develop. If symptoms develop, contact your healthcare provider/make arrangements for COVID-19 testing and follow diocesan protocol. Students participating in antigen testing may be able to return sooner pending county approval.

2. In the last ten days, did any members of your household travel out of state or country?

☐ Yes ☐ No

If you answered "Yes" to question #2, your child(ren) will need to be remote learners for ten days from the day of return unless:

***Your county has approved an earlier return for students testing negative for COVID-19.

3. In the last ten days has your family had visitors from out of state or country?

☐ Yes ☐ No

3a. If you answered "yes" to #3, has it been **less** than ten days since your guests arrived?

☐ Yes ☐ No

4. In the last ten days, did your household gather indoors at one time with more than two other households?

☐ Yes ☐ No

If you answered "yes" to questions #3a or #4, your child will need to be a remote learner until it has been ten days from the date of initial exposure in either question.

If you have answered "No" to the above questions, please continue with this questionnaire and answer the following:

5. Does your student have **one** of the following symptoms?

Fever of 100.4 or greater and/or chills ☐ Yes ☐ No

Cough ☐ Yes ☐ No

Difficulty breathing ☐ Yes ☐ No

Loss of taste/smell ☐ Yes ☐ No



If you answered "Yes" to any of the above symptoms, your child(ren) will need to be remote learners and may return per diocesan protocol.

6. Does your student have any of the following symptoms?

Congestion/running nose	<input type="checkbox"/> Yes	<input type="checkbox"/> No
Nausea/vomiting/diarrhea	<input type="checkbox"/> Yes	<input type="checkbox"/> No
Sore throat	<input type="checkbox"/> Yes	<input type="checkbox"/> No
Headache	<input type="checkbox"/> Yes	<input type="checkbox"/> No
Fatigue/muscle or body aches	<input type="checkbox"/> Yes	<input type="checkbox"/> No

If you answered "Yes" to any two of the above symptoms, your child(ren) will need to be remote learners and may return per diocesan protocol.

7. My child(ren) will temporarily be a remote learner

☐ yes ☐ no

7a. Date expected back on campus: _____

By completing this, I certify that the answers to the above questions are true to the best of my knowledge.



APPENDIX H: SAMPLE TESTING LETTER AND WAIVER



Letter re. Covid-19 Testing for Catholic Schools at SPSV

December 28, 2020

To the Families and Employees of:

- St. Basil the Great School
- St. Catherine of Siena School
- St. Dominic School
- St. Vincent Ferrer School

From: Lincoln Snyder, Superintendent of Schools

Dear Vallejo and Benicia Catholic Elementary School Community:

We are pleased to announce that we are partnering with Solano County and Urgent Care Now, our partner for Covid-19 screening, to offer Covid-19 screening for our employees and all 6th, 7th, and 8th grade students returning to campus after Christmas break. Covid-19 has been on the rise, and social activities outside our normal cohorts - like celebrating holidays - leave us all more vulnerable. The county is offering us a number of testing kits at no cost to our schools, which gives us the opportunity to use antigen screening to establish a baseline for the safest possible return to campus.

Covid-19 antigen screening will take place on **January 3 and January 10 from 8am to 12.30pm** for all school employees and all on-campus learners in 6th, 7th, and 8th grades. In the interest of smoothing traffic flow, our recommended testing windows are:

- St. Basil and St. Catherine: 8am - 9:30am
- St. Dominic and St. Vincent Ferrer - 9:30am - 11:30am

Our goal is to get everyone tested, so if your window doesn't work, don't worry about it - just come. Please make every effort to come early, as a rush at the end may make it difficult for us to screen all tests in a timely manner.

Where:

In partnership with Urgent Care Now, Inc., we will conduct the screening at

St. Patrick-St. Vincent High School, 1500 Benicia Rd, Vallejo, CA 94591.



Look for signs that say "SCHOOL TESTING." If Driving West on Benicia Rd from Columbus Parkway, make a right into the lower parking lot; if driving East on Benicia Rd, make a left into the lot. Follow directions as to which line your school is assigned. Pull through the lot, complete the test and exit from the center driveway, making a right turn only onto Benicia Rd.



Flow through parking lot:

- To help our volunteers direct you, **please write your school name in black marker on a sheet of paper and place it on your car's dashboard.** We will direct you into the proper lane - look for signage.
- If you can, please print and bring the waiver and release of liability, which will accompany this letter. If you don't have a copy of the waiver, a volunteer will provide you one.

Testing:

- Please do not exit your vehicle.
- We will ask to see your ID and then collect the waiver and release (attached to this letter; we will have copies on site in case you are unable to bring signed forms).
- The test will be administered with a nasal swab and then collected.



A: Yes, your test results will remain confidential. Urgent Care Now will inform the school if someone tests positive, but uses an alphanumeric code instead of names to communicate test results.

Q: Is there any risk of harm to my child?

A: No. The test consists of a swab (like a Q-Tip) of your child's lower nasal cavity, so it is minimally invasive.

Q: What about parent volunteers?

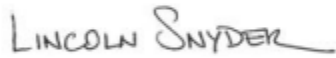
A: Our current protocol discourages volunteers, but effective testing does open the door to us allowing parent volunteers on campus.

Q: Why are you testing the middle school grades?

A: Middle-school-aged kids are at greater risk of contracting and transmitting Covid-19 than younger children, who are not efficient transmitters. Most of the cohorts we have had to move to distance learning have been middle school grades.

Thank you for your commitment to Catholic education.

Peace,



Lincoln Snyder
Superintendent and Executive Director of Schools
The Diocese of Sacramento



Exit:

- You will then follow the signs to exit the parking lot onto Benicia Rd.
- After taking the test, please head home to await your test results. The school will inform the parent of the result, and the student will then be able to come to school the next day.

FAQ

Q: Why are we doing this?

A: Covid-19 is spiking badly in general, and travel and social gatherings during the holidays is greatly contributing to the surge and increasing our risk of contagion on-campus. We want to stay open as a system, and in our conversations with county health, offering testing is one option for mitigating our risk. If we cannot control Covid-19 spread on campus, public health may require us to move to distance learning, and we know how important offering an on-campus presence is for our kids and our communities.

Q: How does this benefit me and my community?

A: Catching Covid-19 early can make a big difference in both treating the disease and preventing its further spread. Everyone is understandably nervous about the current surge in Covid-19, and though testing is not a solution in and of itself, an extra layer of protection will make us objectively safer and reduce anxieties. We've also noticed that testing makes our students more aware of their environments and encourages them to minimize risks.

Q: I recently recovered from Covid-19 and have a note from my doctor. Do I still need to take an antigen test?

No, you do not. You are excused for testing for the period of time as indicated by your doctor.

Q: Who is paying for this?

A: The schools are paying for these tests, and this is not a regularly budgeted expense; at an estimated **\$25 per test**, our schools are bearing a real cost. (Our cost of \$25 is only possible thanks to the support of Urgent Care Now and our county health officers.) **Please consider making a donation to the school to offset the cost of testing if you have the means.** We will be reaching out to the community for support as well.

Q: Are my test results confidential?



SARS-CoV-2 (COVID-19) TESTING – WAIVER & RELEASE OF LIABILITY

The Roman Catholic Diocese of Sacramento has engaged Urgent Care Now, Inc., to perform SARS-CoV-2 (COVID-19) (hereinafter “COVID”) testing on those employees, adult volunteers, and 6th, 7th, and 8th grade students returning to all on-campus activities at **INSERT NAME OF YOUR SCHOOL HERE**. Testing results will be provided to the school. All students opting to return to on-campus activities shall be required to participate in the ongoing testing procedures in an effort to limit the spread of COVID and to quarantine any student that tests positive for COVID. Throughout this document, the term “I,” “You” or “Your” shall refer to the minor student by and through the Parent/Guardian signing on his or her behalf.

In consideration for Your participation in on-campus activities, You acknowledge the following:

1. COVID is a highly contagious disease, the spread of which cannot be completely eliminated, even with the exercise of reasonable and medically recommended precautions;
2. COVID testing is not 100% reliable and, although rare, false positives and false negatives do occur;
3. COVID testing, and all on-campus activities, require You to be in proximity to other people, who may unknowingly be carriers of the disease and may expose You to COVID; and
4. COVID testing does not diminish Your responsibility to adhere to social practices intended to reduce the likelihood of infection, such as frequent hand-washing, social distancing, wearing a face-covering and avoiding gatherings with other people.

You agree that participation in all on-campus activities is voluntary, and as a condition of returning to all on-campus activities, agree to waive any and all claims against the Roman Catholic Bishop of Sacramento, a corporation sole (the Diocese); Pastor of **INSERT YOUR PARISH NAME HERE** Parish, **CITY**, a corporation sole; Immunify, Urgent Care Now, Inc., their officers, directors, members, shareholders, faculty, staff, employees, volunteers, agents, vendors and insurers (hereinafter “Releasees”) for any and all injury, accident, illness, hospitalization, or death occurring as a result of COVID exposure or infection and/or false-negative or false-positive testing. By attending on-campus activities and participating in the testing procedures, You knowingly assume the risk of exposure to COVID and any resulting illness. This waiver includes all claims except those arising from Releasees’ gross negligence.

In order to facilitate accurate and timely testing, contact tracing, and reporting, You waive certain privacy laws and or regulations, including protections under HIPAA and FERPA. This waiver shall only extend to information concerning positive or negative test results gathered by Releasees. For the avoidance of doubt, You permit Releasees to freely share Your information and test results among the school You attend, the Diocese, and Urgent Care Now, Inc.

My signature on this form shall constitute an informed and knowing waiver as required by law. I agree that I have carefully read this agreement, waiver, and release and fully understand its contents. I am aware that this document is a contract between myself and Releasees.

PARENT/GUARDIAN SIGNATURE REQUIRED IF THE STUDENT IS UNDER THE AGE OF 18

Your Name: _____

Date of Birth: _____

If signing on behalf of a student under the age of 18:

Parent/Guardian Name : _____

Date: _____

Parent/Guardian Signature: _____

Date: _____



AUTHORIZATION FOR USE OR DISCLOSURE OF HEALTH AND EDUCATION RECORDS

Completion of this document authorizes the disclosure and use of health information about You. Failure to provide all information requested may invalidate this authorization. Throughout this document, the term “I,” “You” or “Your” shall refer to the minor student by and through the Parent/Guardian signing on his or her behalf.

I hereby authorize Urgent Care Now, Inc., a California Professional Corporation, Praxis Testing Strategies inc, a California Professional Corporation and the Roman Catholic Diocese of Sacramento to share, and to release to county, state and federal health agencies (as required by law) the following information:

Any and all information related to SARS-CoV-2 (COVID-19) testing that I am submitted to and any and all negative or positive results from such testing as well as any information I voluntarily offer related to symptoms, temperature or self-monitoring.

I request this information be shared to facilitate my participation in on-campus activities at parish school at which I am enrolled.

This authorization shall expire on May 26, 2021.

I acknowledge that I may refuse to sign this authorization. I further acknowledge that such refusal will preclude me from attending all on-campus activities at the parish school at which I am enrolled.

I acknowledge that I may inspect or obtain a copy of the health information that I am being asked to disclose here.

I acknowledge that I may revoke this authorization at any time, but I must do so in writing and submit it to the following address: Urgent Care Now, Inc. 12417 Fair Oaks Blvd., Ste. 600, Fair Oaks, CA 95628. My revocation will take effect upon receipt, except to the extent that others have acted in reliance upon this authorization.

I have a right to receive a copy of this authorization. (45 C.F.R. § 164.508(c)(4)). Information disclosed pursuant to this authorization could be redisclosed by the recipient. Such redisclosure is in some cases not prohibited by California law and may no longer be protected by Federal confidentiality law (HIPAA). However, California law prohibits the person receiving my health information from making further disclosure of it unless another authorization for such disclosure is obtained from me or unless such disclosure is specifically required or permitted by law.

To the extent that SARS-CoV-2 (COVID-19) testing, test results, and information regarding symptoms, temperature, and self-monitoring are considered “Education Records” under the Family Educational Rights and Privacy Act (FERPA), I hereby authorize the release of such information to Urgent Care Now, Inc., the Roman Catholic Diocese of Sacramento, and the parish school at which I am enrolled.

PARENT/GUARDIAN SIGNATURE REQUIRED IF THE STUDENT IS UNDER THE AGE OF 18

Your Name: _____

Date of Birth: _____

If signing on behalf of a student under the age of 18:

Parent/Guardian/Employee Name: _____

Date: _____

Parent/Guardian/Employee Signature: _____

Date: _____



APPENDIX I: COVID-19 PREVENTION PROGRAM (CPP)

Executive Director's Foreword

Counties have notified this executive director that they expect us to follow the format of the CPP template. Our current protocols are in their ninth iteration following successful operation of in-person schools since August and September (depending on the county) in our diocese. As such, our protocols often exceed the expectations of the sample CPP template, and reworking our protocols to match the suggested templates would simply do us and public health a disservice in our coordinated response to this pandemic.

As such, I link to appropriate sections of our CSP throughout the body of this template so that the reviewing health officer can quickly and easily see that our plan meets and exceeds expectations of CDPH. [Note: Author's responses are in blue; all underlined words are clickable links that will take you to the pertinent section of the CSP Plan.](#)

If you are reviewing this document on behalf of public health, please do not hesitate to contact me by email at lsnyder@scd.org or by phone at 916 733 0110 should you have questions or concerns.

Peace,
Lincoln Snyder

COVID-19 Prevention Program (CPP) for [The Catholic Schools of The Roman Catholic Diocese of Sacramento](#)

This CPP is designed to control exposures to the SARS-CoV-2 virus that may occur in our workplace.

Date: [February 1, 2021](#)

Authority and Responsibility

[Lincoln Snyder, Executive Director of Catholic Schools](#), has overall authority and responsibility for implementing the provisions of this CPP in our workplace. In addition, all managers and supervisors are responsible for implementing and maintaining the CPP in their assigned work areas and for ensuring employees receive answers to questions about the program in a language they understand.

All employees are responsible for using safe work practices, following all directives, policies, and procedures, and assisting in maintaining a safe work environment.



Identification and Evaluation of COVID-19 Hazards

We will implement the following in our workplace:

- Conduct workplace-specific evaluations using the Appendix A: Identification of COVID-19 Hazards form.

We have met and exceeded the level of specificity in Appendix A. Please see the following pages of this attached CSP for detailed plans evaluating and providing for the mitigation of Covid-19 risk in our schools:

- [CAL/OSHA COVID-19 PREVENTION PROGRAM](#)
- [Safe Environment](#)
- [Appendix B: Facility Adjustments](#)
- [Appendix C: Protocol Signage](#)
- Evaluate employees' potential workplace exposures to all persons at, or who may enter, our workplace. Please see [General Protocols](#) of the attached CSP plan for steps evaluating and mitigating employees' potential workplace exposures.
- Review applicable orders and general and industry-specific guidance from the State of California, Cal/OSHA, and the local health department related to COVID-19 hazards and prevention. Please see [Appendix D: Agency Updates](#) for links to pertinent documents on which we have based our protocols.
- Evaluate existing COVID-19 prevention controls in our workplace and the need for different or additional controls. This plan is now in its ninth iteration since July; as such, we have updated it approximately every four weeks.
- Conduct periodic inspections using the Appendix B: COVID-19 Inspections form as needed to identify unhealthy conditions, work practices, and work procedures related to COVID-19 and to ensure compliance with our COVID-19 policies and procedures. Please see our portal website, www.scd.org/2021schools, for a Covid-19 Safety Plan for each county and school of the Diocese of Sacramento.

Employee participation

Employees and their authorized employees' representatives are encouraged to participate in the identification and evaluation of COVID-19 hazards by:

- [Maintaining control of classrooms and the school oce](#)
- [Maintaining control of overall environment, including symptom screening, supervision of adherence to protocols and social distancing, and participation in antigen screening](#)
- [Participation in contact tracing](#)
- [Teaching students proper conduct](#)
- [Regularly reviewing the CSP Plan as a sta \(we have averaged more than 1 update per month\)](#)



Employee screening

We screen our employees by:

- Please see the following sections of the CSP Plan:
 - [Antigen Screening](#)
 - [Screening](#)
 - [Covid Symptoms and Case Response](#)
 - [Appendix C: Protocol Signage](#)

Correction of COVID-19 Hazards

Unsafe or unhealthy work conditions, practices or procedures will be documented on the Appendix B: COVID-19 Inspections form, and corrected in a timely manner based on the severity of the hazards, as follows:

- Should an individual have symptoms or test positive, they will not be allowed on campus.
- Should administration become aware of any behaviors or arrangements not in compliance with this CSP Plan, the school principal will be directed to correct the situation by the next business day.
- Please see the sections entitled COVID Symptoms and Case Response and Appendix E: Communications for detailed information on responses to potential and/or confirmed exposures on campus.

Control of COVID-19 Hazards

Physical Distancing

Where possible, we ensure at least six feet of physical distancing at all times in our workplace by [\(Please note the following sections in the plan\):](#)

- [Social Distancing](#)
- [Student Stable Groups](#)
- [Shared Spaces](#)
- [Facility Adjustments](#)
- [School Schedules and Routines](#)
- [Appendix B: Facility Adjustments](#)
- [Appendix C: Protocol Signage](#)

Individuals will be kept as far apart as possible when there are situations where six feet of physical distancing cannot be achieved.



Face Coverings

We provide clean, undamaged face coverings and ensure they are properly worn by employees over the nose and mouth when indoors, and when outdoors and less than six feet away from another person, including non-employees, and where required by orders from the California Department of Public Health (CDPH) or local health department.

Please see the section entitled [Face Coverings](#) for details on their use on campus.

The following are exceptions to the use of face coverings in our workplace:

- When an employee is alone in a room
- While eating and drinking at the workplace, provided employees are at least six feet apart and outside air supply to the area, if indoors, has been maximized to the extent possible.
- Employees who cannot wear face coverings due to a medical or mental health condition or disability, or who are hearing-impaired or communicating with a hearing-impaired person. Alternatives will be considered on a case-by-case basis.
- Specific tasks that cannot feasibly be performed with a face covering, where employees will be kept at least six feet apart.

Any employee not wearing a face covering, face shield with a drape or other effective alternative, or respiratory protection, for any reason, shall be at least six feet apart from all other persons unless the unmasked employee is tested at least twice weekly for COVID-19.

Engineering controls

We implement the following measures for situations where we cannot maintain at least six feet between individuals:

- Please see the sections entitled [HVAC Considerations](#) and [Facility Adjustments](#).

We maximize, to the extent feasible, the quantity of outside air for our buildings with mechanical or natural ventilation systems by:

- Please see the sections entitled [HVAC Considerations](#) and [Facility Adjustments](#).

Cleaning and disinfecting

We implement the following cleaning and disinfection measures for frequently touched surfaces:

- Please see the sections entitled [Healthy Hygiene Practices](#) and [Safe Environment](#).

Should we have a COVID-19 case in our workplace, we will implement the following procedures:

- Please see the section entitled [Safe Environment](#).



Shared tools, equipment, and personal protective equipment (PPE)

PPE must not be shared, e.g., gloves, goggles and face shields.

Items that employees come in regular physical contact with, such as phones, headsets, desks, keyboards, writing materials, instruments and tools must also not be shared, to the extent feasible. Where there must be sharing, the items will be disinfected between uses by the employee or by school custodial staff, depending on application. [Please see the sections entitled Healthy Hygiene Practices and Safe Environment.](#)

Hand Sanitizing

In order to implement effective hand sanitizing procedures, we: [please see the sections entitled Healthy Hygiene Practices and Appendix C: Protocol Signage.](#)

Personal protective equipment (PPE) used to control employees' exposure to COVID-19

We evaluate the need for PPE (such as gloves, goggles, and face shields) as required by CCR Title 8, section 3380, and provide such PPE as needed.

When it comes to respiratory protection, we evaluate the need in accordance with CCR Title 8 section 5144 when the physical distancing requirements are not feasible or maintained.

Investigating and Responding to COVID-19 Cases

This will be accomplished by using the Appendix C: Investigating COVID-19 Cases form.

[Each school has an identified contact tracer in the protocol. We will distribute Appendix C to them via the school principal on February 1 with the directive to use the proper form.](#)

Employees who had potential COVID-19 exposure in our workplace will be:

Indicate how the following will be accomplished:

- [Offered COVID-19 testing at no cost during their working hours. The Diocese of Sacramento is currently operating COVID-19 Antigen Screening at multiple locations. Should these locations and times not be feasible for the employee to be screened, or should the employee require a PCR test, the school principal shall offer the employee time during working hours to go to their primary care provider, county-operated PCR screening facility, or other licensed provider as appropriate to take a COVID-19 test.](#)



- The information on benefits described in Training and Instruction, and Exclusion of COVID-19 Cases, below, will be provided to them in an email by the school principal and/or the Catholic School Department.

System for Communicating

Our goal is to ensure that we have effective two-way communication with our employees, in a form they can readily understand, and that it includes the following information:

- Who employees should report COVID-19 symptoms and possible hazards to, and how: [Employees shall report symptoms and hazards to the school principal.](#)
- That employees can report symptoms and hazards without fear of reprisal.
- Our procedures or policies for accommodating employees with medical or other conditions that put them at increased risk of severe COVID-19 illness.
- Where testing is not required, how employees can access COVID-19 testing: [the school principal shall notify employees of testing.](#)
- In the event we are required to provide testing because of a workplace exposure or outbreak, we will communicate the plan for providing testing and inform affected employees of the reason for the testing and the possible consequences of a positive test.
- Information about COVID-19 hazards employees (including other employers and individuals in contact with our workplace) may be exposed to, what is being done to control those hazards, and our COVID-19 policies and procedures: [The entire CSP Plan provides information on the mitigation of Covid-19 hazards.](#)

Training and Instruction

We will provide effective training and instruction that includes:

- Our COVID-19 policies and procedures to protect employees from COVID-19 hazards.
- Information regarding COVID-19-related benefits to which the employee may be entitled under applicable federal, state, or local laws.
- The fact that:
 - COVID-19 is an infectious disease that can be spread through the air.
 - COVID-19 may be transmitted when a person touches a contaminated object and then touches their eyes, nose, or mouth.
 - An infectious person may have no symptoms.
- Methods of physical distancing of at least six feet and the importance of combining physical distancing with the wearing of face coverings.
- The fact that particles containing the virus can travel more than six feet, especially indoors, so physical distancing must be combined with other controls, including face coverings and hand hygiene, to be effective.



- The importance of frequent hand washing with soap and water for at least 20 seconds and using hand sanitizer when employees do not have immediate access to a sink or hand washing facility, and that hand sanitizer does not work if the hands are soiled.
- Proper use of face coverings and the fact that face coverings are not respiratory protective equipment - face coverings are intended to primarily protect other individuals from the wearer of the face covering.
- COVID-19 symptoms, and the importance of obtaining a COVID-19 test and not coming to work if the employee has COVID-19 symptoms.

Please see the section entitled [Staff Training and Family Education](#).

Appendix D: COVID-19 Training Roster will be used to document this training.

[Every school has already completed training on Covid-19 protocols with every employee. The school principal will provide a roster of employees to public health officials upon request.](#)

Exclusion of COVID-19 Cases

Where we have a COVID-19 case in our workplace, we will limit transmission by:

- Ensuring that COVID-19 cases are excluded from the workplace until our return-to-work requirements are met.
- Excluding employees with COVID-19 exposure from the workplace for 14 days after the last known COVID-19 exposure to a COVID-19 case.
- Continuing and maintaining an employee's earnings, seniority, and all other employee rights and benefits whenever we've demonstrated that the COVID-19 exposure is work related.
- Providing employees at the time of exclusion with information on available benefits. This will be accomplished by:
 - [The Lay Personnel Department of the Diocese of Sacramento consults with all employees on a case-by-case basis to inform them of their benefits and rights in the case of taking ill with COVID-19. Employees who test positive for COVID-19 may consult with benefits specialist Julianna Aguilera, tel. 916 733 0282, email \[jaguilera@scd.org\]\(mailto:jaguilera@scd.org\).](#)

Reporting, Recordkeeping, and Access

It is our policy to:

- Report information about COVID-19 cases at our workplace to the local health department whenever required by law, and provide any related information requested by the local health department.
- Report immediately to Cal/OSHA any COVID-19-related serious illnesses or death, as defined under CCR Title 8 section 330(h), of an employee occurring in our place of employment or in connection with any employment.



- Maintain records of the steps taken to implement our written COVID-19 Prevention Program in accordance with CCR Title 8 section 3203(b).
- Make our written COVID-19 Prevention Program available at the workplace to employees, authorized employee representatives, and to representatives of Cal/OSHA immediately upon request.
- Use the Appendix C: Investigating COVID-19 Cases form to keep a record of and track all COVID-19 cases. The information will be made available to employees, authorized employee representatives, or as otherwise required by law, with personal identifying information removed.

Return-to-Work Criteria

COVID-19 cases with COVID-19 symptoms will not return to work until all the following have occurred:

- At least 24 hours have passed since a fever of 100.4 or higher has resolved without the use of fever-reducing medications.
- COVID-19 symptoms have improved.
- At least 10 days have passed since COVID-19 symptoms first appeared. • COVID-19 cases who tested positive but never developed COVID-19 symptoms will not return to work until a minimum of 10 days have passed since the date of specimen collection of their first positive COVID-19 test.
- A negative COVID-19 test will not be required for an employee to return to work.
- If an order to isolate or quarantine an employee is issued by a local or state health official, the employee will not return to work until the period of isolation or quarantine is completed or the order is lifted. If no period was specified, then the period will be 10 days from the time the order to isolate was effective, or 14 days from the time the order to quarantine was effective.

Approved this 1st day of February, 2021, by



Lincoln Snyder

Executive Director of Schools

The Roman Catholic Diocese of Sacramento

lsnyder@scd.org

Tel. 916 733 0110

