

# 2020-21 Return to Campus Plan

Cristo Rey High School Sacramento COVID-19 Response



# Table of Contents

<b>Message from the Principal</b>	<b>3</b>
<b>Reopening At a Glance</b>	<b>4</b>
Phased Reopening Plan	4
Social-Emotional Resources	4
<b>Safety Starts at Home</b>	<b>5</b>
Staying Home When Symptomatic, Sick, or After Exposure	5
Family Choice	5
Participation in Class from Home	5
Return to School	5
<b>Defining Symptoms, Exposure, Infection, and Terms of Isolation/Return</b>	<b>6</b>
Defining Symptoms of COVID-19	6
Defining Quarantine & Isolation	6
COVID-19 Symptoms and Case Responses	6
Communication of COVID Cases & Contact Tracing	8
<b>Campus Safety</b>	<b>9</b>
Drop Off	9
Daily On-Campus Health Survey	9
Signage	9
Social Distancing	9
Face Coverings	10
Face Coverings Discipline	11
Hygiene	12
Traffic Flow	12
Facilities	13
Faculty & Staff Shared Spaces	14
<b>Academics</b>	<b>16</b>
On-Campus Academic Schedule	16
Student Cohorts	16
Classroom and Desk Assignments	16
Class Start Up Routine	16
Class End and Cleaning Routine	17
Academic Schedule	17
Virtual or In-Person Family Choice	17
Community Agreement Acknowledgement of Return to Campus Plan	18

## Message from the Principal

Cristo Rey Community,

Administrators on campus have been working diligently all semester to provide a comprehensive response to the COVID-19 pandemic and prepare for a safe return to campus. As the Return to Campus Plan was developed, we ensured that the planning process was rooted in the Jesuit tradition of *cura personalis* (care for the whole person) and *cura apostolica* (care for the institution) reflected our key priorities for reopening:

1. The safety and wellbeing of our community members.
2. The ability to sustain the quality of our academic and Work Study programs.
3. The alignment of our procedures and protocol to that of local, state and federal guidelines.

It is clear that we cannot eliminate the spread of COVID-19 on our campus, therefore our primary goal is to reduce the opportunity for transmission. This handbook outlines in detail the policies and procedures that are critical to keeping our community healthy. We ask that our faculty, staff, students, families, and community members work together to bring this plan to fruition by closely adhering to all of the guidelines in the pages that follow. In addition, we ask that our community exercise caution while off campus. Practicing good hygiene, social distancing, wearing a mask, and avoiding large gatherings will limit the possibility of bringing the virus on campus. Risky behaviors off campus put everyone on campus in danger. Now more than ever, we ask that our community care for one another by doing your part on and off campus to keep all individuals safe.

It is unclear at the moment how long this pandemic will last. COVID-19 may impact different schools, counties, cities, and states in distinct ways. For this reason, Cristo Rey High School is committed to making decisions that best serve the needs of our community. This document will be updated on a bi-monthly basis (or as needed) to reflect the most current guidance from public health officials, scientific knowledge, and clinical best practices. We ask for your support and patience as we navigate the reopening process together.



Kate Coulouras  
Principal

## Reopening At a Glance

### Phased Reopening Plan

We have adopted a phased reopening approach that aligns with [California's Blueprint for a Safer Economy](#). As the state of California transitions between the tiers outlined below, Cristo Rey High School will adjust accordingly. (Note that once our school opens under the guidelines for each tier, it can remain open regardless of a surge in cases within our county.\*)

	Widespread	Substantial	Moderate	Minimal
<b>New Cases in Sacramento County</b>	More than 7 daily new cases (per 100k)	4 - 7 daily new cases (per 100k)	1 - 3.9 daily new cases (per 100k)	Less than 1 daily new cases (per 100k)
<b>Positive Tests in Sacramento County</b>	More than 8% positive tests	5 - 8% positive tests	2 - 4.9% positive tests	Less than 2% positive tests
<b>Cristo Rey Sacramento All-School Instruction</b>	Virtual <i>All Classes Online</i>	Hybrid <i>1 Grade Level on Campus Per Day</i>	Hybrid <i>2 Grade Levels on Campus Per Day</i>	In-Person <i>3 Grade Levels on Campus Per Day</i>
<b>Cristo Rey Sacramento Academic Support</b>	Virtual	In-Person	In-Person	Pull-Out (Offered During School Day)
<b>Counseling</b>	Virtual	Virtual & In-Person	Virtual & In-Person	In-Person

\*Individual schools may need to close if there is an outbreak of cases 5% or more within our school community.

### Social-Emotional Resources

Shifting to virtual learning and making the transition back to campus may take a toll on the wellbeing of our Cristo Rey community, especially our students. All students are enrolled in Cura Personalis, a course that takes place once a week and focuses on self-care and relationship building. In addition, all students have access to social-emotional counseling virtually or in-person.

**Ms. Ileana Oseguera**

Cell Phone: (916) 668-0632

Email: [ioseguera@crhss.org](mailto:ioseguera@crhss.org)

[Link to Schedule an Appointment](#)

**Mr. Edin Barrera**

Cell Phone: (818) 276-6821

Email: [ebarrera@crhss.org](mailto:ebarrera@crhss.org)

[Link to Schedule an Appointments](#)

If you cannot reach our Cristo Rey Sacramento Counseling Office or need immediate assistance, the following resources are available to students and parents:

- **California Youth Crisis Line:** They provide youth crisis counseling 24 hrs a day, seven days a week.
  - Suicide Crisis Line: 1-800-843-5200
- **WellSpace Health:** They provide 24hr crisis counseling through phone and online messaging and a 24hr Crisis Line for parents seeking emotional support.
  - Suicide Crisis Line: 916-368-3111
  - Parent Support Line: 1-888-281-3000
  - Via Text: "HOPE" to 916-668-4226

## Safety Starts at Home

### Staying Home When Symptomatic, Sick, or After Exposure

The most important thing that we can do to prevent virus transmission among our school community throughout the school year is to avoid bringing it onto campus in the first place. Students and employees will be expected and asked to stay home in the following situations:

- **When exhibiting symptoms associated with COVID-19.** See "Defining Symptoms of COVID-19" to monitor circumstances and promote compliance.
- **After close contact with persons who have tested positive for COVID-19.** Close contact is defined as less than 6 feet for 15 minutes or longer with or without a mask.
- **After returning from travel to certain locations,** as guided by CDC, local public health officials, or Cristo Rey High School Sacramento.

### Family Choice

We understand that some students will need to learn at home throughout this pandemic, or that families may choose to keep their children at home. All classes will be set up to support on-campus and distance learning. A survey was sent to families to determine how many families may choose this option so that we can prepare accordingly. (See Academics for more information)

### Participation in Class from Home

When a student needs to stay home for COVID-related reasons as described above, or any other reason, but is feeling well enough to continue to participate in class, students should attend school remotely. In most cases, our goal is that students remain fully enrolled in all of their classes and keep up with classwork throughout the time they need to be at home, as long as they are well enough to do so. Students will still participate along with their classmates and teachers on campus, which will allow them to keep pace with the learning activities and assignments of their classes. It is important that we provide appropriate incentives for students to stay home when needed, whether they are feeling sick, are self-monitoring due to possible exposure, or simply don't feel comfortable with the risk of being in a group setting. For example, there will not be class incentives for in-person attendance such as bonuses for perfect in-person attendance, or points that are only available if a student is present that day. Students who participate from class at home are still required to wear uniform and to have a working camera and microphone to participate in class. Enrollment periods will be revised at the beginning of each quarter or as determined by the school administration.

### Return to School

Students and their families who need to stay home due to COVID-related symptoms will receive guidance from Cristo Rey High School on what they need to do in order to return to school. In some cases, this may include a student getting a COVID test or seeing a physician. In other scenarios, it may include staying home, isolating and self-monitoring for a defined time period. We will rely upon guidelines from medical professionals and public health officials to make these determinations.

# Defining Symptoms, Exposure, Infection, and Terms of Isolation/Return

## Defining Symptoms of COVID-19

### High-risk: red flag symptoms



Fever ( $\geq 100.4^{\circ}\text{F}$ )  
(and/or chills)



**Cough**



**Difficulty breathing**



**Loss of taste/smell**

### Low-risk: general symptoms



Congestion/runny nose



Nausea/vomiting/diarrhea



Fatigue/muscle  
or body aches



Sore throat



Headache

## Defining Quarantine & Isolation

- **Quarantine:** Condition in which a contact's activities are restricted. The contact is separated from others to prevent onward disease transmission to those who are susceptible. Contacts should be quarantined for the duration of their incubation period.
- **Isolation:** Condition in which a case is separated from others. Isolation occurs under conditions (for example, having a private bedroom and bathroom) that will prevent or limit the transmission of an infectious agent to those who are susceptible. Cases should be isolated for the entirety of their infectious period.

## COVID-19 Symptoms and Case Responses

	Student or Staff with:	Action	Notification
1	COVID-19 Symptoms	1 Low-Risk Symptom: Send home $\geq 2$ Low-Risk or 1 High-Risk Symptom: Send Home & Evaluation by Health Care Provider Recommend testing (If positive, see #3, if negative, see #4) School/classroom remain open	N/A

2	Close contact (†) with a confirmed COVID-19 case	Send home Quarantine for 10 days from last exposure Recommend testing (but will not shorten 10-day quarantine) School/classroom remain open	Notification of a known contact
3	Confirmed COVID-19 case infection	Notify the local public health department Isolate case and exclude from school for 10 days from symptom onset Identify contacts (†), quarantine & exclude exposed contacts (likely entire cohort (††)) for 10 days after the last date the case was present at school while infectious Recommend testing of contacts, prioritize symptomatic contacts (but will not shorten 10- day quarantine) Disinfection and cleaning of classroom and primary spaces where case spent significant time School remains open	School community notification of a known case
4	Tests negative after symptoms	May return to school 24 hours after symptoms resolve School/classroom remain open	Notification if prior awareness of testing

(†) A contact is defined as a person who is <6 feet from a case for >15 minutes with or without a mask. In some situations, it may be difficult to determine whether individuals have met this criterion and an entire cohort or other group may need to be considered exposed, particularly if they have shared time indoors.

(††) A cohort is a stable group with fixed membership that stays together for all courses and activities (e.g., lunch, recess, etc.) and avoids contact with other persons or cohorts. Cohorts at Cristo Rey High School Sacramento will be identified as grade-levels.

---

Chart sourced from **COVID-19 and Reopening In-Person Learning Framework for K-12 Schools in California, 2020-2021 School Year** July 17, 2020

## Communication of COVID Cases & Contact Tracing

When a Cristo Rey Sacramento community member tests positive for COVID-19, he or she will immediately inform the Contact Tracing Team (the Principal, Assistant Principal, Dean of Students, or Director of Work Study).

- The Contact Tracing Team will begin the contact tracing process. Local health officials will be contacted if there is an outbreak of COVID-19 on campus (3 or more persons with positive COVID-19 tests). The contact tracing protocol for Cristo Rey Sacramento is as follows:



*Cristo Rey High School Sacramento will keep all medical information confidential and will only disclose it on a need-to-know basis.*

The classroom or office where the patient was based will be closed off and will not be used until after thorough cleaning and disinfection. Cleaning and disinfecting of the area should take place 24 hours after use. If 24 hours is not feasible, wait as long as possible. Contacts to the infected patient will be identified and asked to quarantine/isolate. Any decision to move the school to distance learning will be made in collaboration with the county public health officer.



### Drop Off

**Academics:** Students arriving for on-campus learning will arrive at the front of school between 7:30-7:50 am (see Bell Schedule under Academic). Upon successful completion of the On-Campus Student Health Survey and temperature check, students will report directly to their first period classrooms. Breakfast will be provided in the courtyard.

- **Late Drop Off:** Students that arrive with insufficient time to complete the check-in process and arrive to class before 8:00 am will be marked tardy. Late drop off will take place between 8:00 am and 8:15 am and will result in a tardy. Students that arrive after 8:15 am will not be allowed to enter the building.

**Work Study:** Students arriving for work study deployment will enter through the plaza gates on the Jackson Road side of the building (the rear side of the school building). All deployed students will need to complete the On-Campus Student Health Survey and temperature check before entering the MP Room. All students being deployed have been given a specific arrival time based on their van route. If a student needs to arrive earlier due to carpools or siblings arriving for academic reasons, work study students will be required to remain in the MP Room until their van route departs. Additionally, work study students will not be allowed to enter through the front of the school, they will still need to enter at the back of the school through the plaza gates. Likewise, siblings or carpool 'buddies' will not be allowed to enter through the plaza if it is not their assigned work day. Breakfast and lunch will be provided.

### Daily On-Campus Health Survey

All students and employees will be required to complete the "On-Campus Health Survey" before coming to school or in the check-in line located outside of the front door. The survey is required for Work Study, Academics, Athletics, and any other school-sponsored program or meetings. Our "On-Campus Health Survey" screening tool will provide guiding questions that give daily reminders of symptoms to be looking for and other situations in which students and staff should stay home (see "Symptoms & Case Responses" Chart).

If a student or staff member indicates having a low or high risk COVID-19 symptom, they will be asked to return home. If a student is already on campus at the onset of symptom(s), they will be asked to isolate in Room 101 until a parent or guardian can come to the school for pick up.

### Signage

- **Two-Way Foot Traffic & Staircases:** The second floor is accessible from the back staircase and the floors of the hallways are labeled for 2-way traffic. The front staircase will be designated as a second floor exit only.
- **QR Codes:** The student and adult on-campus health survey can be accessed by QR code that is posted in the front of the school.
- **Restrooms:** Restrooms floors are labeled to ensure social distancing while washing hands. Hand washing instructions are also posted in front of each sink.
- **Breathing Spaces:** Designated areas outside are labeled to indicate areas where masks can be removed.

### Social Distancing

All persons on campus will practice social distancing of six feet whenever possible. All physical contact (e.g. handshakes, fistbumps, and hugs) is to be avoided. It may not always be possible to maintain six feet of distance, which is why it is imperative to practice social distancing combined with good hygiene practices and the use of a face mask. Close contact interactions (for the purposes of determining contact tracing) is considered less than 6

feet and for more than 15 minutes. Signage will be used throughout campus to support social distancing and proper hygiene norms. All furniture in student lounge areas have been removed to discourage gathering in public areas. For the remainder of the 2020-21 school year, mass gatherings and assemblies will be prohibited. We plan to follow diocesan guidelines to offer liturgy for our community in a safe and distant manner. Cristo Rey High School Sacramento has implemented the following accommodations to support the practice of social distancing:

- Only the largest classroom will be utilized for in-person instruction.
- Arrangement of desks for maximum distance. Students will be spaced at 6 feet apart while seated in their classroom desk.
- The front row of desks in each classroom will be equipped with plexiglass barriers and will also be spaced at 6 feet from the teaching area.
- The teacher's workstation in class will be equipped with a plexiglass barrier as well.
- Assigned seating in the classroom (this is also relevant to contact tracing, see below)
- Reducing and eliminating shared classroom materials whenever possible

### Face Coverings

Wearing a face covering will help protect people around you, including those at higher risk of severe illness from COVID-19 and workers who frequently come into close contact with other people. The spread of COVID-19 can be reduced when face coverings are used along with other preventive measures that have also been implemented at Cristo Rey Sacramento, including but not limited to daily symptom self-checks, physical distancing, frequent handwashing, and cleaning and disinfecting frequently touched surfaces.

Effective immediately and until further notice, all students, employees, and visitors on the Cristo Rey Sacramento campus are required to wear a face covering at all times once they leave their personal vehicle.

A cloth face covering or disposable mask must be worn. Face coverings can be purchased or homemade. Students are responsible for their own face coverings and are advised to bring 2 face coverings to school each day in case one gets lost or damaged. Face coverings should be kept clean and neat and can be any color or geometric pattern so long as the mask is free of any inappropriate written messages or symbols.

#### The most effective fabrics for cloth masks are:

- Tightly woven fabrics, such as cotton and cotton blends
- Breathable
- Two or three layers

#### Less effective fabrics for cloth masks are:

- Loosely woven fabrics, such as loose knit fabrics
- Difficult to breathe through (like plastic or leather)
- Single layer

CDC is currently studying the effectiveness of various cloth mask materials. We will update this guidance as we learn more.

Those who are unable to wear face coverings for medical reasons are allowed to wear a face shield with a cloth drape. Per Cal/OSHA, face shields should include a cloth drape attached across the bottom and tucked into the shirt. Teachers will also have the option to wear a face shield while teaching their class.

Cristo Rey Sacramento will only provide face coverings in case of emergency. As stated above, we advise parents to provide face coverings for their students, as numerous face coverings will be necessary throughout the school experience. The following are the only exceptions to this policy:

- Employees working alone in a private office do not need to wear a face covering but must put it on when leaving their office or when a visitor enters.
- Face covering may be removed for eating in designated spaces (MP Room and courtyard).
- Face covering may be removed in designated breathing spaces (courtyard).
- Athletes must wear face covering until they get to their practice field. All athletes will receive guidance from their coaches regarding the removal of masks during practice.

## Face Coverings Discipline

The proper wearing of face coverings by students will be enforced by the faculty and staff as part of their daily professional responsibilities. Students who do not comply with this expectation, or any of the virus mitigation expectations, will be subject to disciplinary action, including suspension from school, requiring them to learn from home. Please review the proper way to wear a mask:

### DO

- ✓ Cover mouth and nose fully
- ✓ Have mask fit snugly against the sides of the face so there are no gaps
- ✓ Secure with ties, elastics or other means to prevent slipping
- ✓ Avoid touching your face or mask as much as possible.
- ✓ Clean hands with soap and water or alcohol-based hand sanitizer immediately, before putting on, after touching or adjusting, and after removing the face covering
- ✓ Do mark the outside of the mask in some way so you can easily identify which side is the outside of the mask, and handle it accordingly. Some individuals mark the outside with their initials in permanent ink.
- ✓ Do keep a bag handy for storing the mask every time you take it off –preferably a paper or cloth bag. An open plastic Ziploc-style bag is an alternative if a paper or cloth bag is not available.
- ✓ Always store a mask in a clean place. Never store it in your pocket.
- ✓ Keep the covering clean.
- ✓ Laundry instructions will depend on the material used to make the face covering. In general, face coverings should be washed and dried regularly and stored in a clean container or bag.

### DON'T

- ✗ Don't share your mask with anyone else unless the mask has been washed and dried first.
- ✗ You should be the only person handling your covering.
- ✗ Don't pull your mask below your nose or chin while you are wearing it. Leaving the mask dangling or improperly fitted to your face creates opportunities for cross-contamination



[UT Southwestern Medical Center](#)

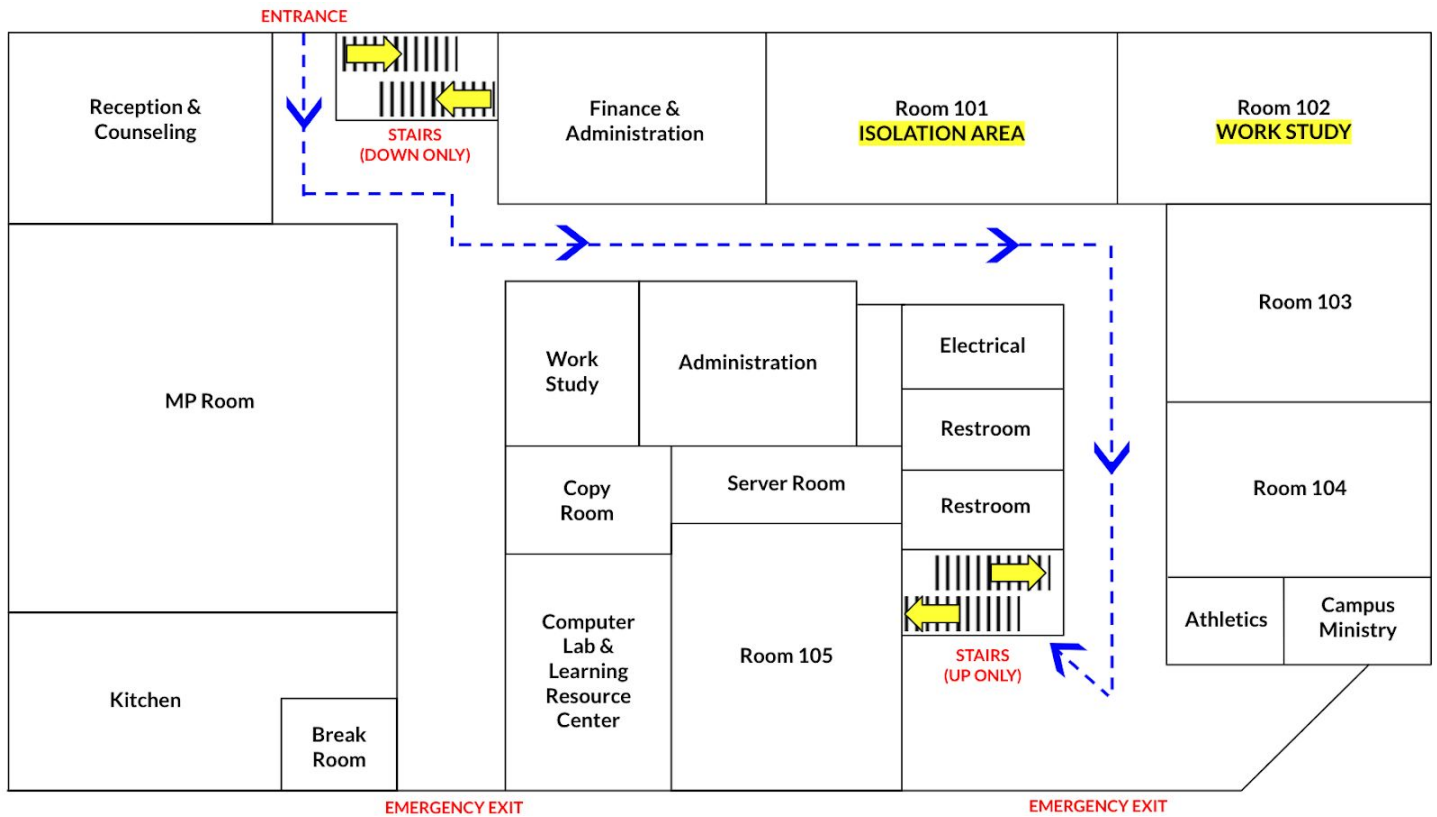
## Hygiene

Students, faculty, and staff will receive education and instruction in personal hygiene procedures that are shown to reduce the risk of virus transmission. Daily hygiene measures on campus include:

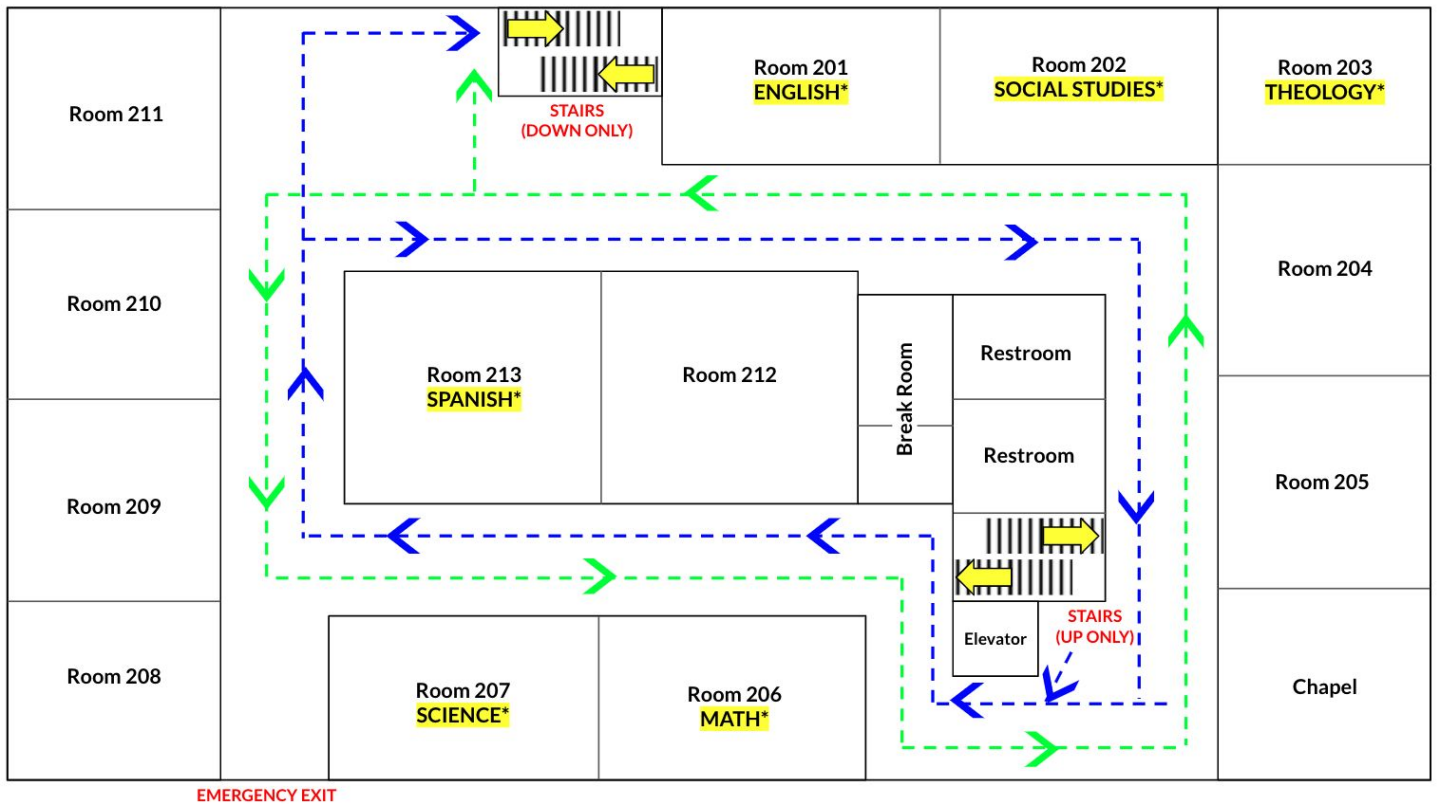
- Frequent handwashing
- Hand-sanitizer dispensers will be present in every classroom; students sanitize upon entrance and departure.
- Disinfectant wipes or disinfectant spray are available in every classroom to wipe down the learning area after each class.
- Restrooms for hand washing will be available throughout campus. Restrooms lines will be marked and physically distanced to prevent crowding.
- Students are encouraged to carry and use their own hand sanitizer throughout the day.
- Reminders of safe sneezing/coughing etiquette.

## Traffic Flow

### First Floor



## Second Floor



\*Content courses are designed to the classrooms labeled on the map, but are subject to change given the schedule of each student and teacher.

## Facilities

- **Restrooms:** Maximum occupancy in all restrooms should not exceed the number of sinks available. If waiting to use the restroom, students, faculty, staff, and visitors should form a socially distant line outside

of the restroom according to the markings on the ground. Occupants of the restrooms should use the facilities, promptly wash his or her hands, and exit the restroom without delay.

- Masks required, as this is viewed as transitional activity.
- Clearly marked distance markers for staging outside of the restroom.
- Disinfecting of restrooms will be maintained regularly throughout the school day.
- Students are expected to use the restroom nearest to class and return to class directly.
- Transitions should be kept to a minimum to mitigate transmission.
- **Water Fountains:** Water fountains will be accessible for bottle-filling only. Students will continue to be encouraged to bring their own reusable water containers and rely on them throughout the school days. Water fountains are located near the restrooms on the first and second floor.
- **Multi-Purpose (MP) Room:** The MP Room is to be used for Work Study check in and for eating. Desks will be arranged facing the same direction with 6+ feet spacing.
  - **Lunch Program:**
    - **Forming a Line:** During the designated lunch hour, teachers will walk their class down to the MP Room and assist in forming a line that is 6 feet apart (ground will be marked).
    - **Entering Lunch Number:** Staff will enter lunch numbers and apply hand sanitizer upon entry into the server.
    - **Assigned Seating:** When students exit the cafeteria, they will sit in an assigned desk that will be properly recorded and dated to ensure contact tracing can occur efficiently.
    - **Cleaning Up:** Students will be dismissed by faculty and staff and will remain 6 feet apart. They will drop off and/or throw away dirty dishes and apply sanitizer again.
  - **Lunch Supervision:** Adults on campus have been assigned a Lunch A or B. During this time, teachers are expected to eat in the MP Room and monitor students. A maximum of 45 students will be eating lunch at the same time.
- **Student Lounges:** All furniture has been removed from the student lounges and hallways on the first and second floors. These areas are to be used for passing from classroom to classroom, but not for congregating.
- **Isolation Area (101):** Room 101 has been identified as the isolation room. If students or adults develop symptoms while on campus, they can remain in Room 101 until pick up or for monitoring.
- **Classrooms (see Academics)**
- **Lockers:** Student lockers will be taped off and will not be accessible for student use for the remainder of the 2020-21 school year.
- **Ventilation:** They will place air purifiers in all classrooms and common areas to provide an additional layer of safety.

## Faculty & Staff Shared Spaces

Employees are encouraged to disinfect their workspace multiple times throughout the day, paying special attention to commonly touched surfaces. Sites have hand sanitizers and cleaning products accessible throughout the workplace to disinfect frequently touched objects and surfaces.

There will be limited access to certain workspaces to reduce exposure and ensure safety. Workspace usage is as follows:

- **Office Capacity:** Site will restrict the number of persons in the offices to maintain social distancing.
- **Conference Rooms:** Conference rooms will be closed until further notice. All staff meetings will provide virtual options, even for employees in the office or school.
- **Faculty/Staff Break Rooms:** These spaces are closed for gathering and eating.
- **Copy Room:** There will be limited access to the copy room. Signage indicating restrictions will be posted. Hand sanitizing pumps and disinfectant will be available after use.

# Academics

## On-Campus Academic Schedule

	Monday	Tuesday	Wednesday	Thursday	Friday
On-Campus Learning (Upstairs Classrooms)	12th Grade	9th Grade	11th Grade	10th Grade	100% Asynchronous/ At-Home Learning  All Grade Levels
Academic Support (Computer Lab)	11th Grade	10th Grade	12th Grade	9th Grade	
Work Study (MP Room)	9th Grade	12th Grade	10th Grade	11th Grade	

### Student Cohorts

Students will operate in cohorts at all times (courses, breaks, lunch, sports, etc.). Cohorts are identified as students within the same grade level. Cohorts are not to share instructional spaces unless cleaning occurs between uses. Students will have designated spaces solely for their use inside the classroom that is socially distant from their peers. Under no circumstances should students or staff share workspaces or supplies. Stable cohorts are beneficial in that they:

- limit the number of possible exposures if someone on campus becomes infected with COVID-19.
- can reduce the number of people who become ill.
- assist with effective contact tracing and case investigations.
- lessen the impact of COVID-19-induced quarantines and closures.

### Classroom and Desk Assignments

Only our largest classrooms will be occupied to ensure the most amount of space between students. We will centralize cleaning supplies, technology accessories, and PPE in the classrooms being utilized. Students will have assigned seating to ensure limited contact between themselves and other students. By having assigned seats, students will benefit from:

- Quickly entering the classroom to begin class start up routine
- Contact tracing between class periods
- Ensure adequate desk spacing for social distancing
- Easy departure by row or column after disinfection session

### Class Start Up Routine

There are specific responsibilities and routines that will be necessary to implement at the start of all in person class meetings. They include:

- **Attendance:** Teachers will take attendance at the start of every period for both the students present in the room and the students participating remotely.
- **Technology Set Up:** Teachers will need to set up their classrooms with the appropriate cameras, microphones to accommodate the students learning from home. Students will need to have their computer/chromebook charged and bring their charger with them to each class. While attendance is

being taken and the teacher is setting up, the student should also be taking out their equipment and logging in and ensuring the wifi is connected.

### Class End and Cleaning Routine

There are specific responsibilities and routines that will be necessary to implement at the start of all in person class meetings. They include:

- **Technology Pack Up:** Before wiping down their work station, students will need to log out of their device, properly and safely store the device in their backpack/bag and remember to unplug and neatly wrap their charger cords. Once all materials are safely stowed, the disinfection session will start. Teachers will need to sign out of Zoom, turn off the camera, microphone and other technology used (ex: projector) as the students pack up their materials.
- **Disinfection Session:** In the last five minutes of each class, students will assist in cleaning by wiping down their work station (chair, desk). Students will use disinfectant provided by the school and will use hand sanitizer before leaving the classroom between classes after they have packed up their materials/technology.

### Academic Schedule

Students will have a staggered entry to campus depending on their course schedule. Carefully note when drop off and dismissal times are based on the student schedule. We know this will cause problems for carpools, after school activities, friend groups and more. However to ensure a smooth and safe transition to return to school, the assignments can not change and you must arrive in the designated time windows. Students at home must also follow this schedule to know when to log on to their synchronous Zoom classes.

#### Periods:

- 50 minute classes
- 10 minute passing period (including 5 minute cleaning protocol)
- 2 groups (A/B) for lunch- 40 minutes each lunch period
- 2 groups (A/B) for Cura Personalis- 35 minutes for each group

#### Study Hall:

- Depending on your report time, you may have more or less study hall time than other students. This time may be before school, after school or both depending on your school schedule. Please plan accordingly to bring additional work or readings. This time is not optional to attend.
- This time will also be used on occasion for counseling meetings or college knowledge sessions.

### Virtual or In-Person Family Choice

The revision of the daily schedule accounts for students and families who wish to continue distance learning as well as those who plan to return to campus. If you are interested in moving from one type of learning to another, please read the process below:

- **Moving from Distance Learning to In-Person Learning:** We will revise our in-person learning rosters every quarter. During hybrid learning, if you are enrolled in distance learning and wish to come to campus, you must wait until the end of each quarter.
- **Moving from In-Person Learning to Distance Learning:** To transition to distance learning, you will need to complete the distance learning request form. Once this is completed/submitted, your student will be able to start distance learning as soon as the next school day.



## Community Agreement Acknowledgement of Return to Campus Plan

I have received a copy of the Cristo Rey High School's Return to Campus Plan and understand that it contains important information on Cristo Rey Sacramento High School's COVID-19 policies and procedures. I acknowledge that I am expected to read, understand, and adhere to these policies and will familiarize myself with the material in this document. I understand that:

- I am governed by the contents of the Return to Campus Plan.
- Cristo Rey High School Sacramento may change, rescind or add to any policies, or practices described in the Return to Campus Plan from time to time, and at its discretion.
- By signing below, I acknowledge that I have read, understand, and will abide by the requirements in the Return to Campus Plan.

---

Print Name

---

Signature

---

Date

## Sources of Information

Cristo Rey High School Sacramento's administration has developed this document upon reviewing information from the following sources:

- Diocese of Sacramento
- Centers for Disease Control
- California Department of Public Health
- Johns Hopkins University and Medicine Coronavirus Resource Center
- Sacramento County Public Health
- Jesuit High School Sacramento Safe Return Plan
- St. Patrick St. Vincent Catholic High School Safe Return to Campus Guidebook